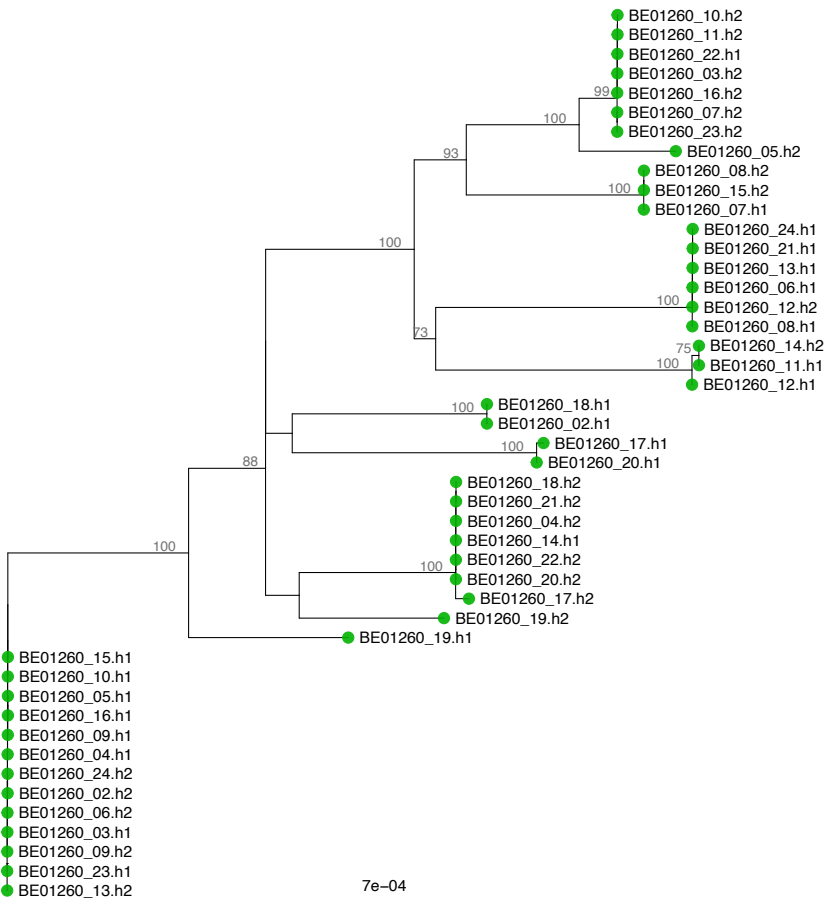
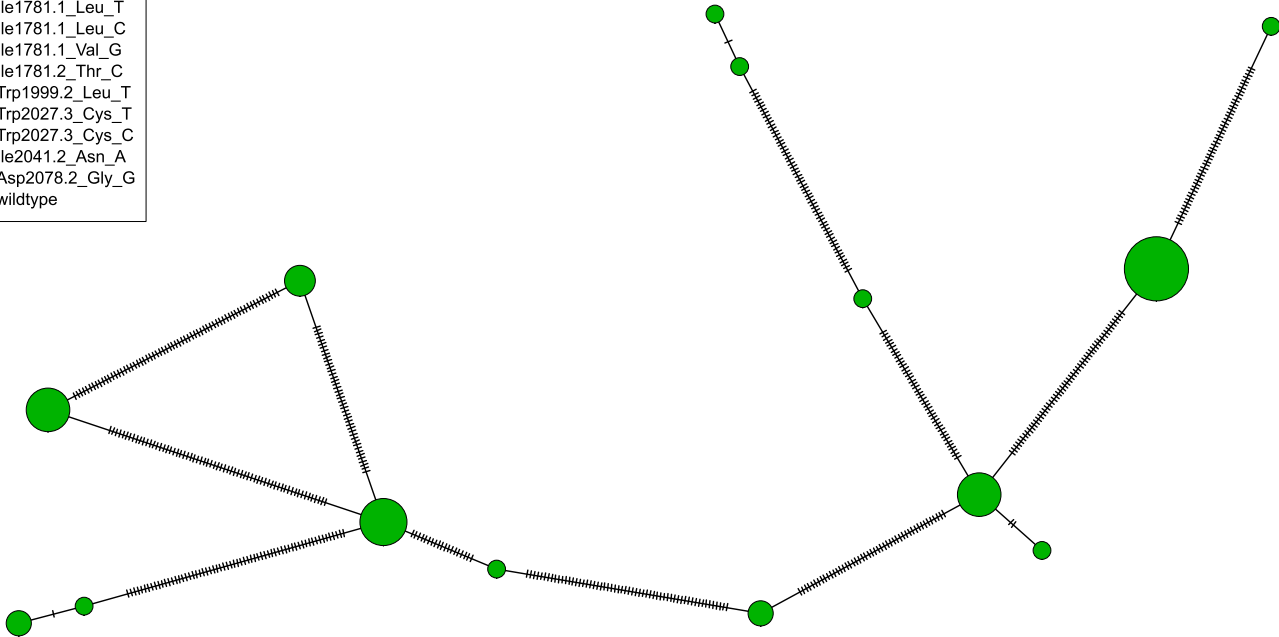
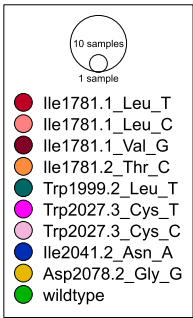


5e-04

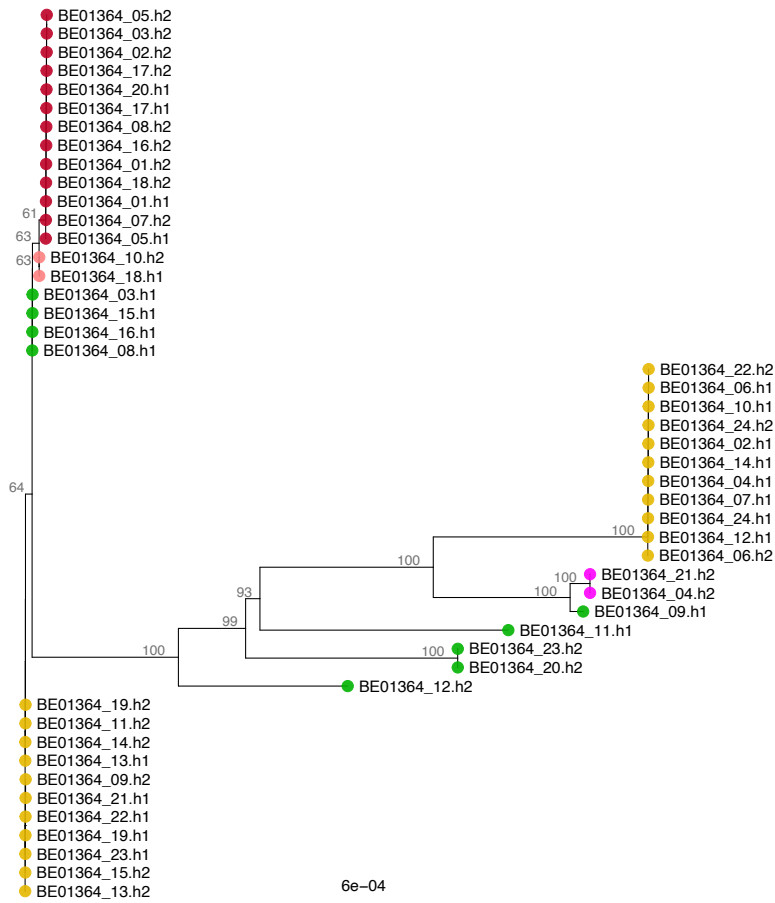
BE01260



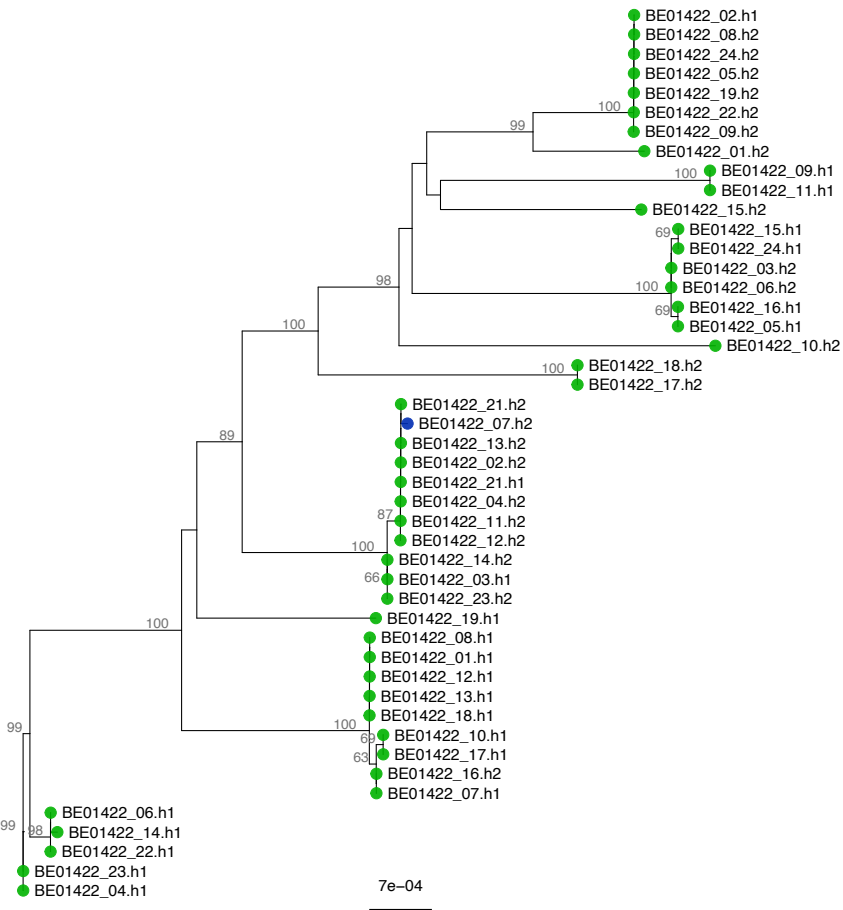
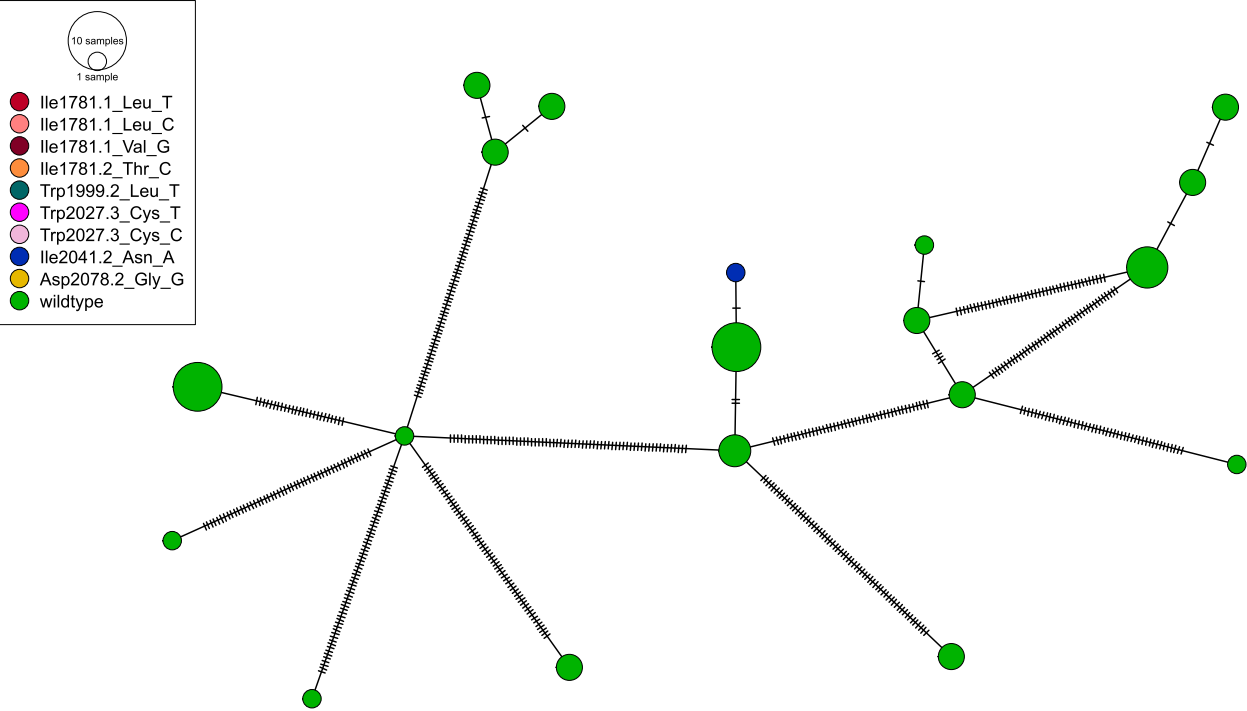
7e-04

Diagram illustrating the structure of a 10-sample library. A large circle represents the library, labeled "10 samples". Inside it, a smaller circle represents a single sample, labeled "1 sample". Below the diagram is a legend listing the 10 samples with their corresponding colors:

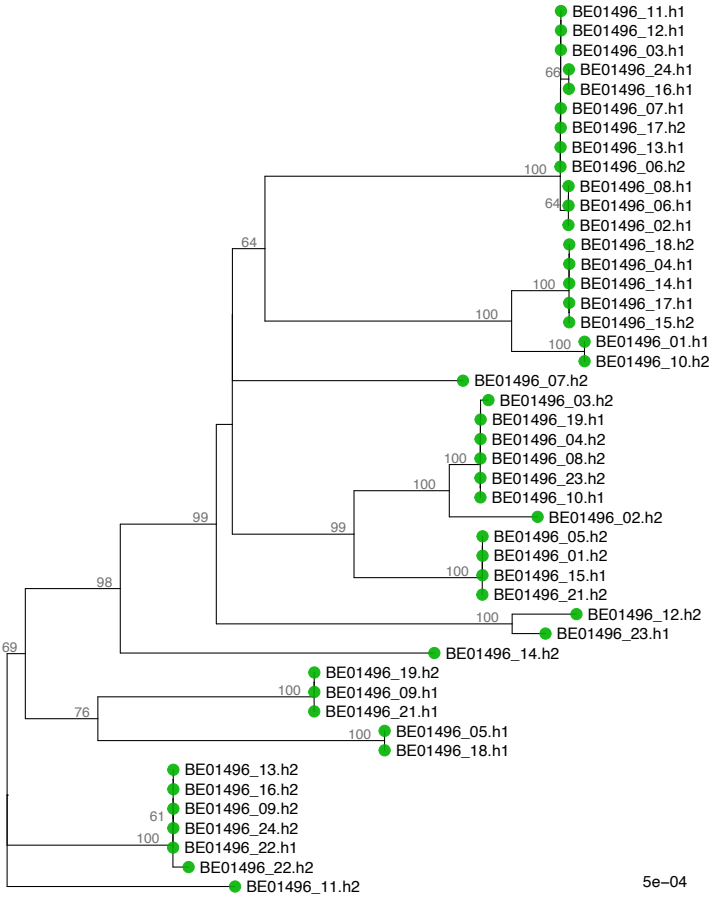
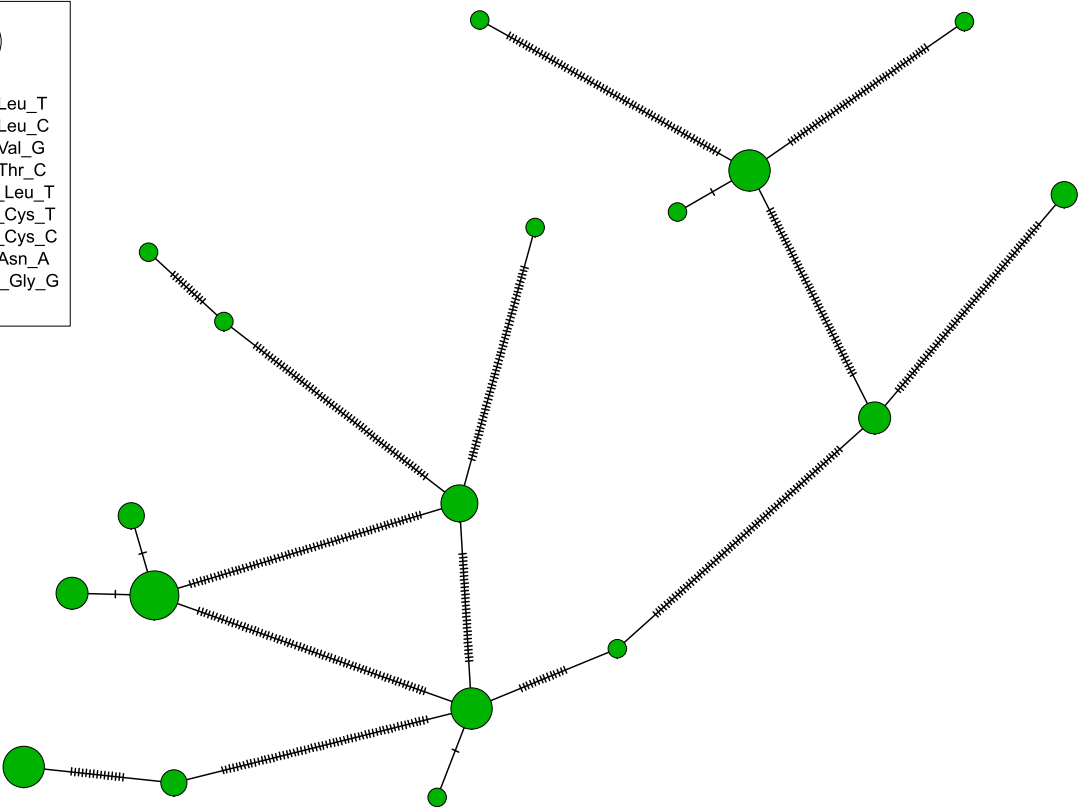
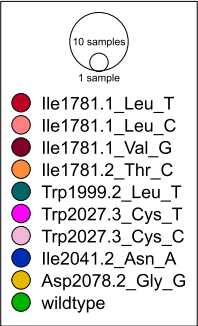
- Ile1781.1\_Leu\_T (Red)
- Ile1781.1\_Leu\_C (Pink)
- Ile1781.1\_Val\_G (Light Orange)
- Ile1781.2\_Thr\_C (Orange)
- Trp1999.2\_Leu\_T (Dark Green)
- Trp2027.3\_Cys\_T (Magenta)
- Trp2027.3\_Cys\_C (Light Purple)
- Ile2041.2\_Asn\_A (Blue)
- Asp2078.2\_Gly\_G (Yellow)
- wildtype (Green)



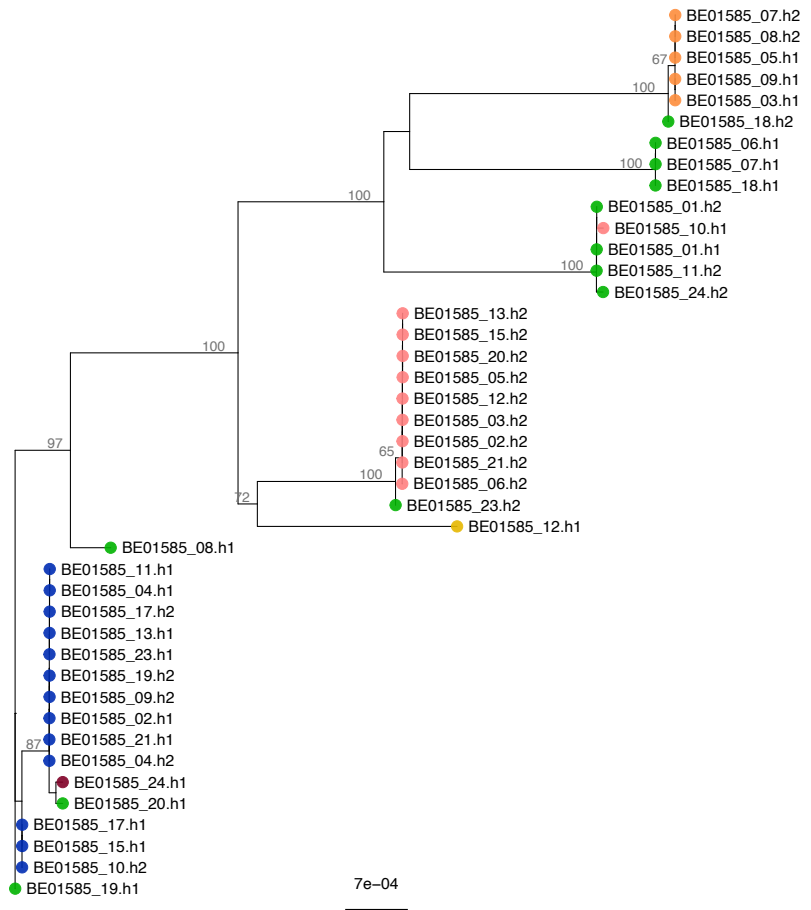
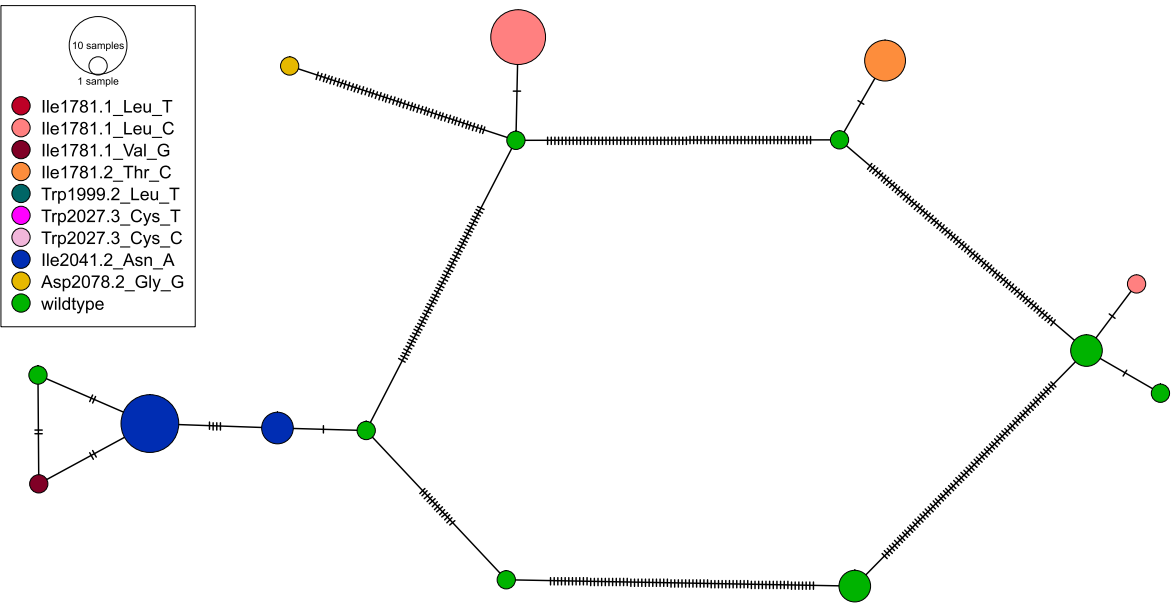
BE01422



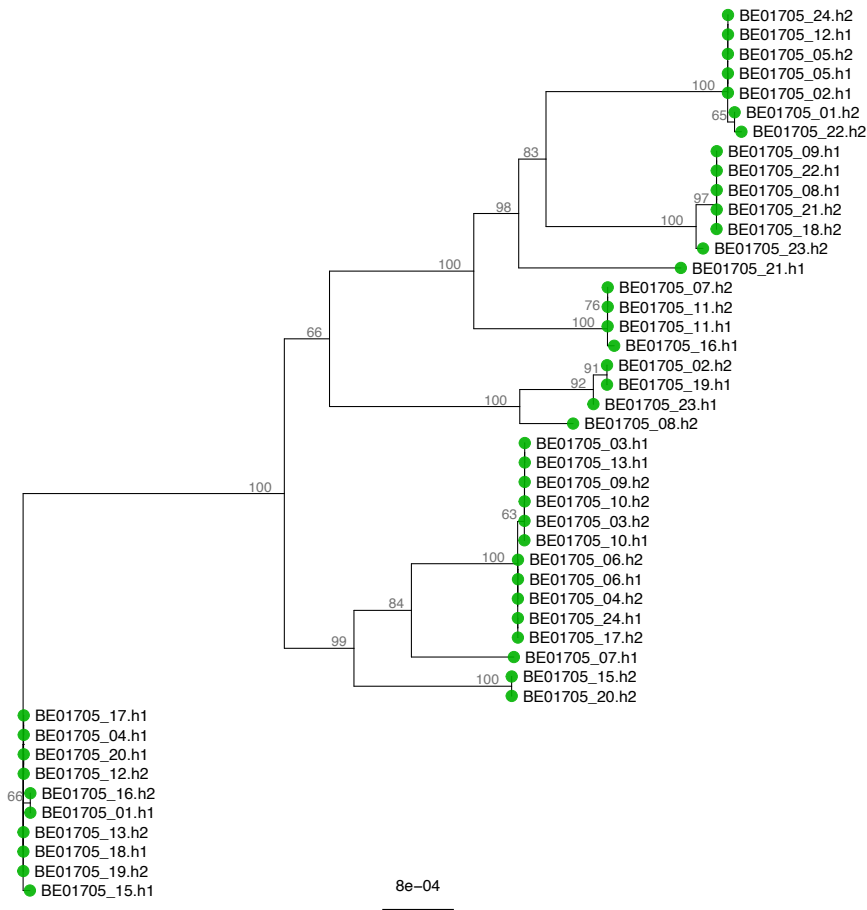
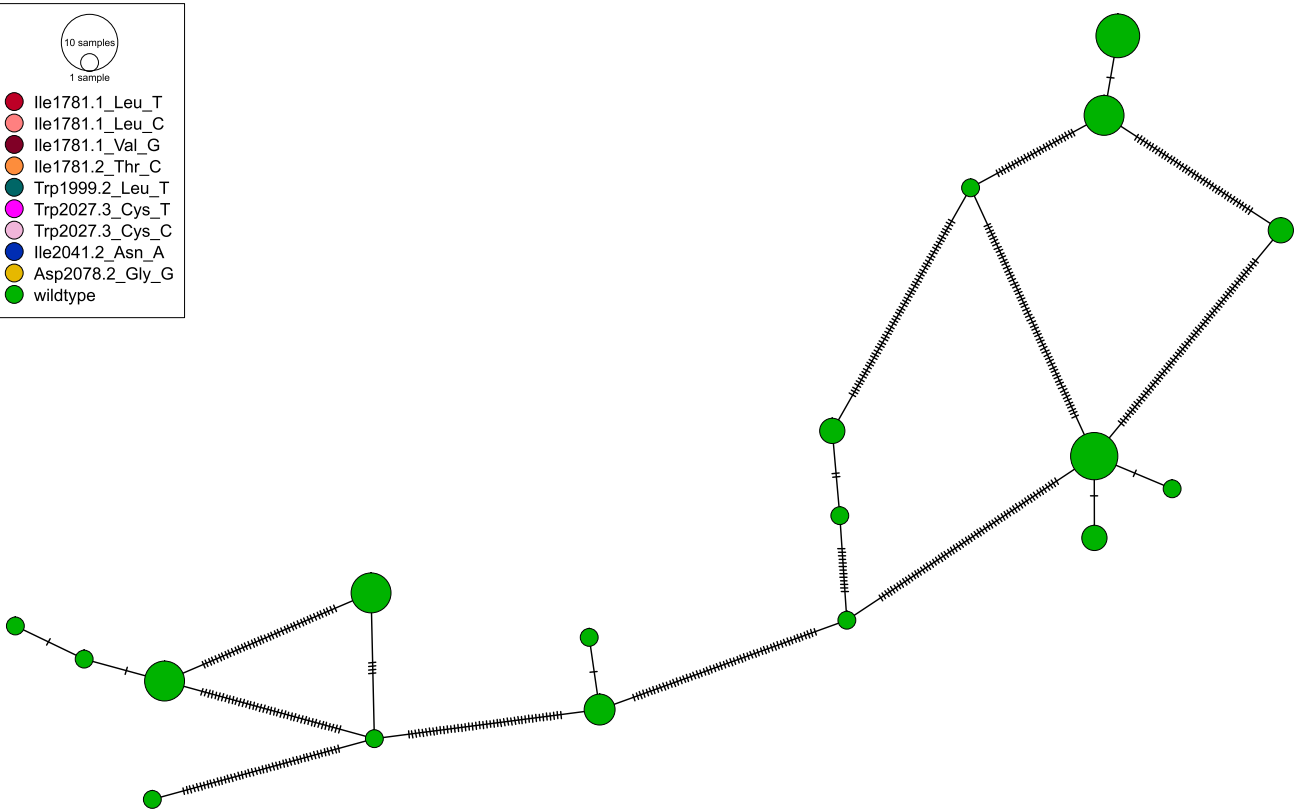
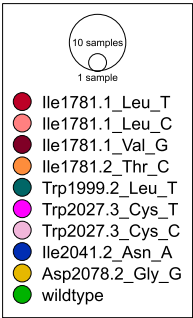
BE01496



BE01585

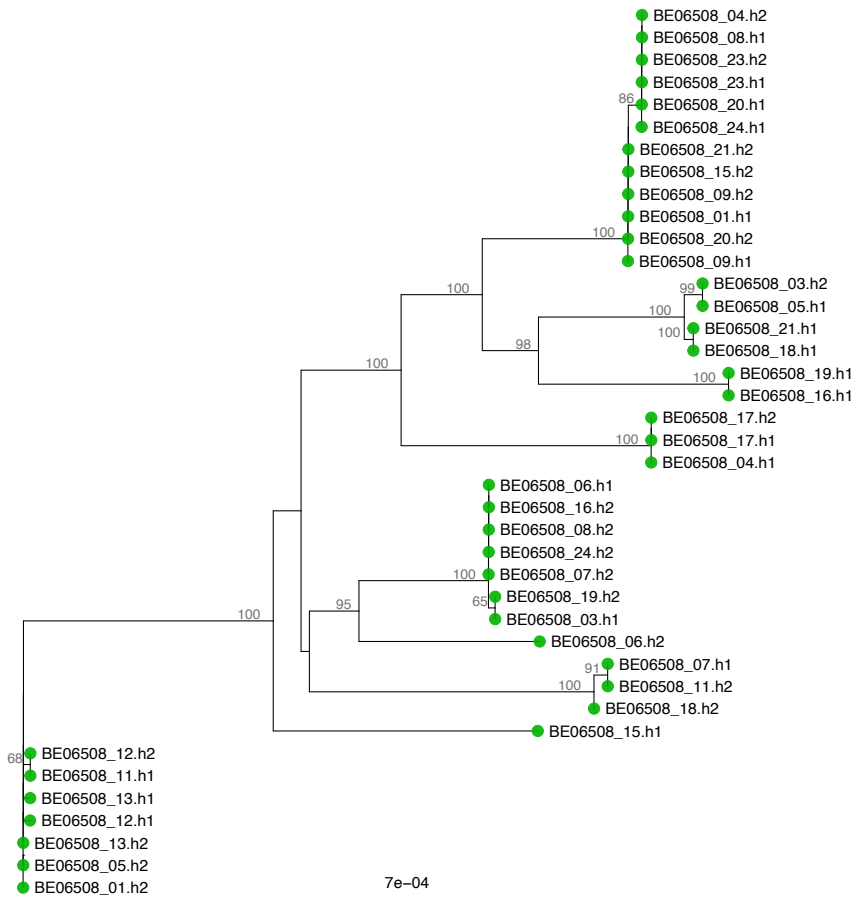
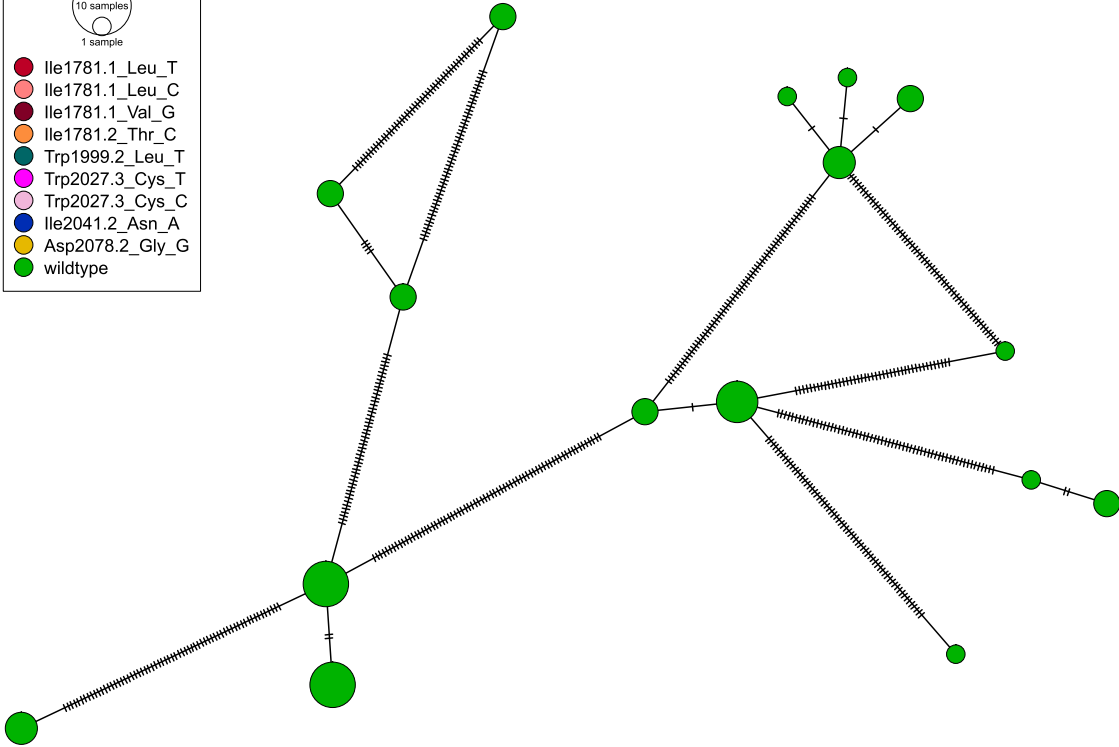
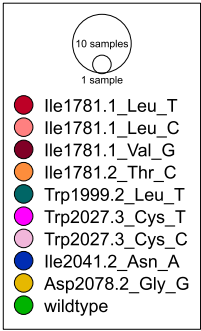


BE01705



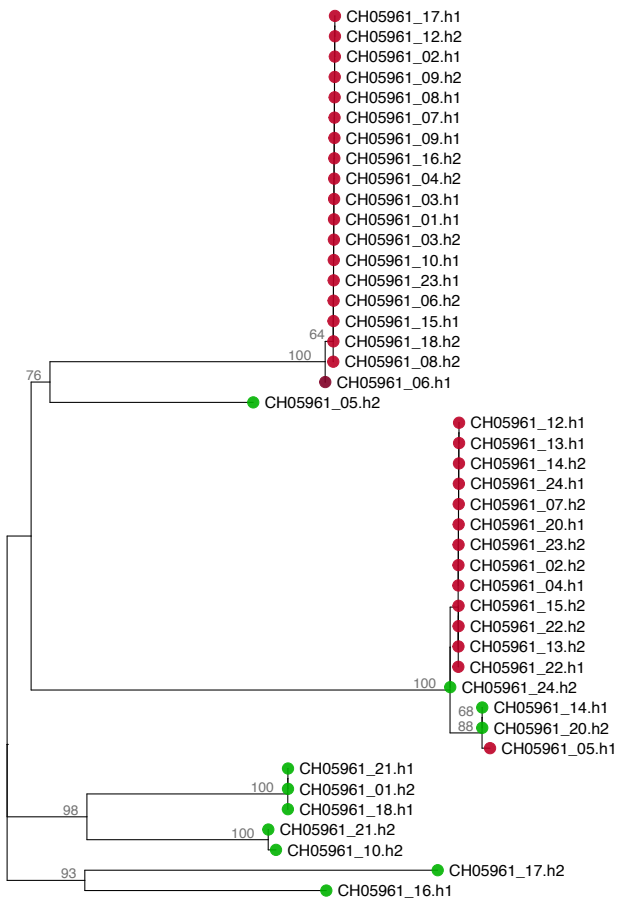
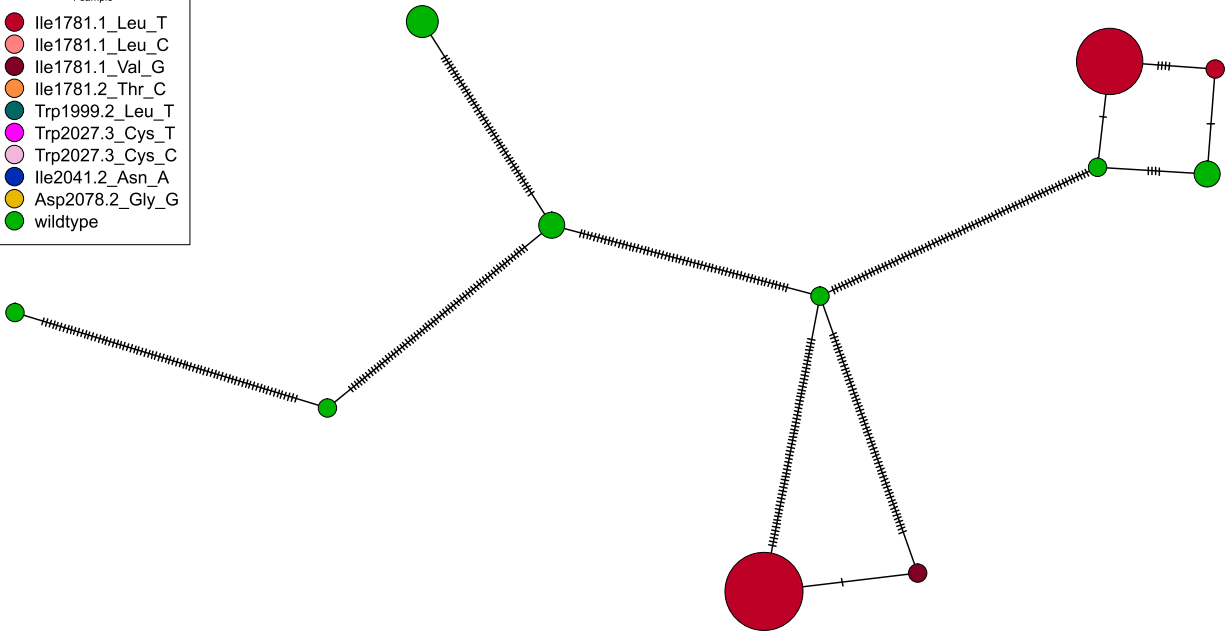
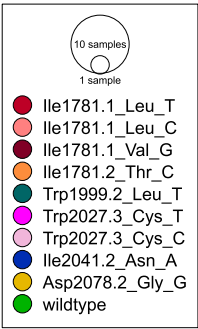
8e-04

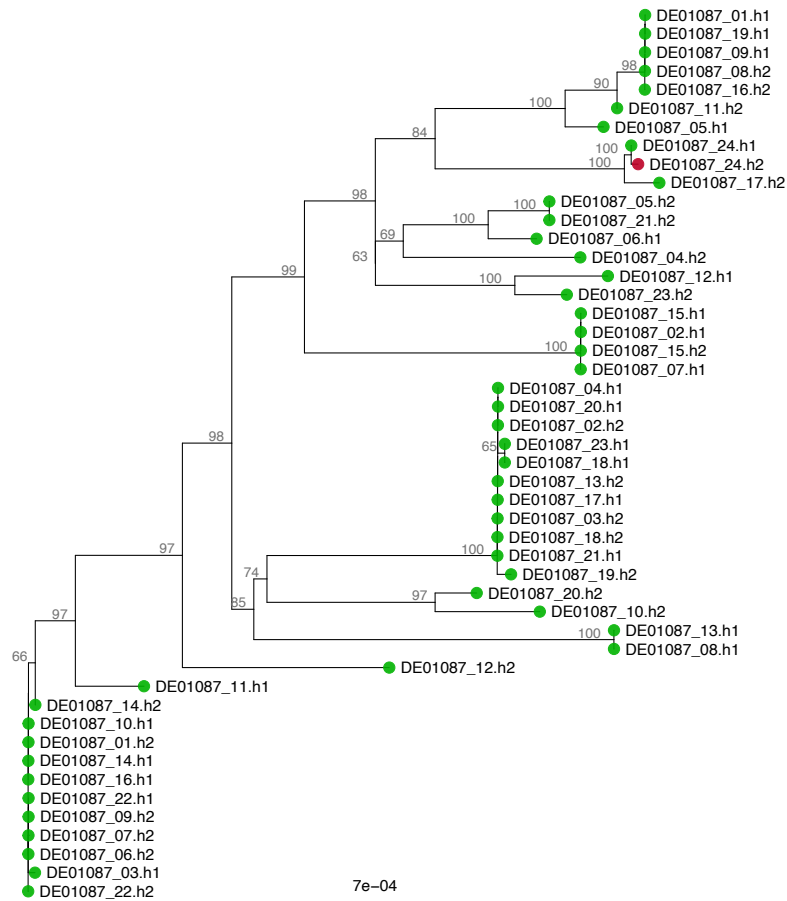
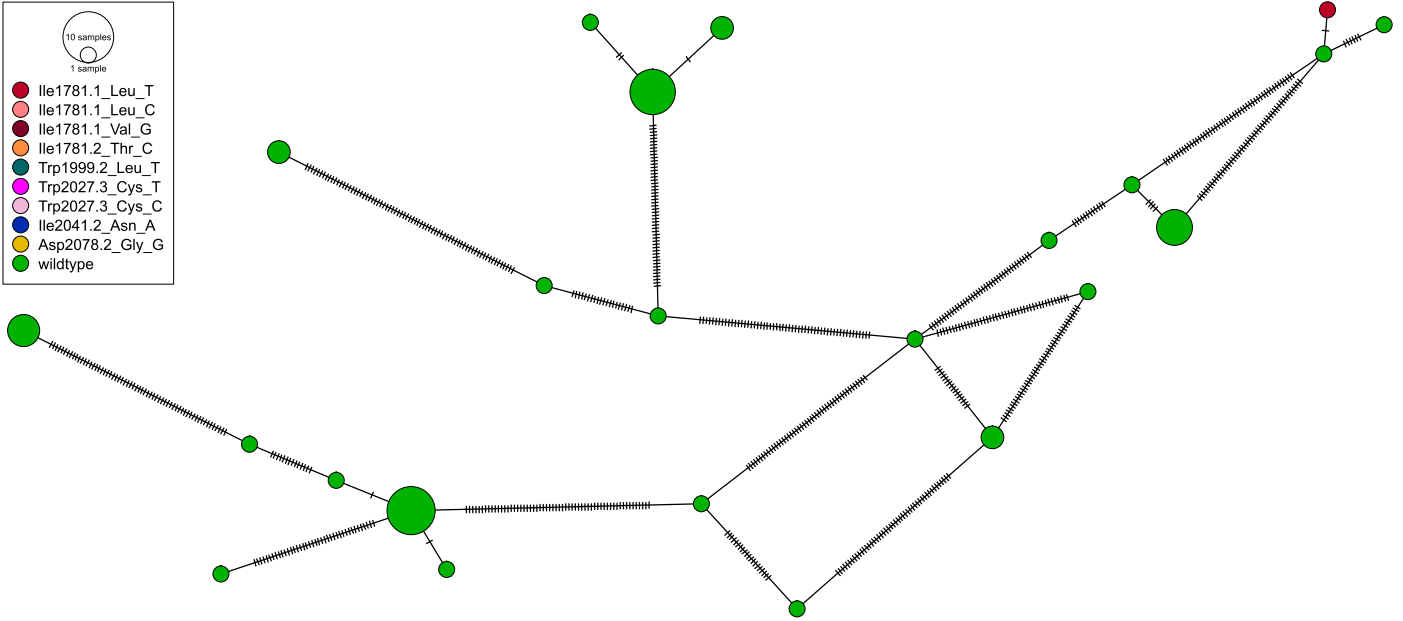
BE06508

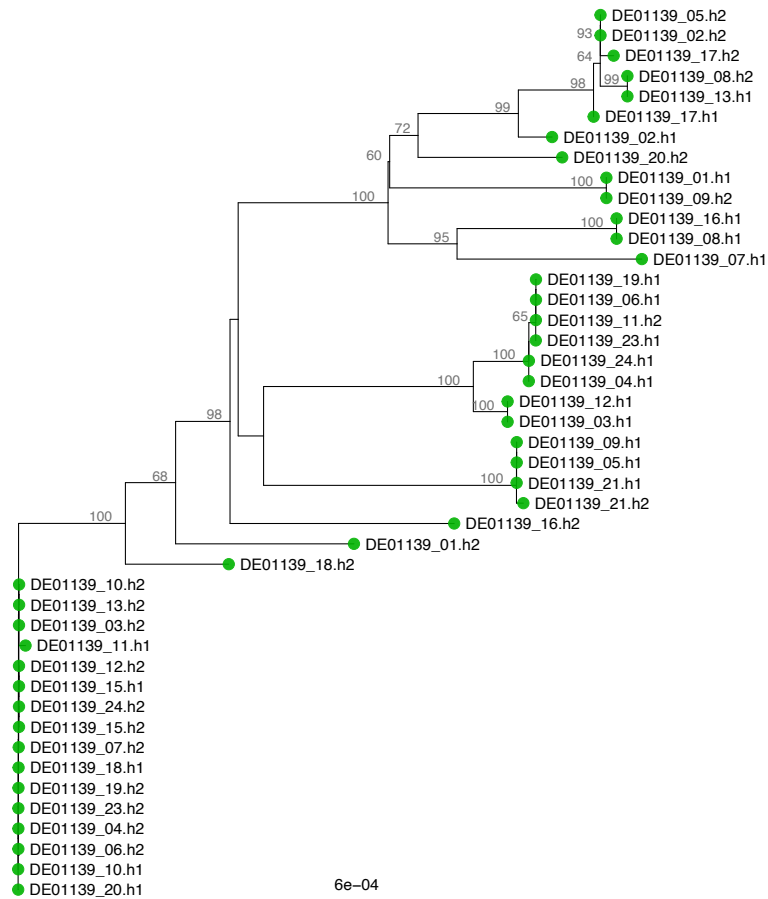
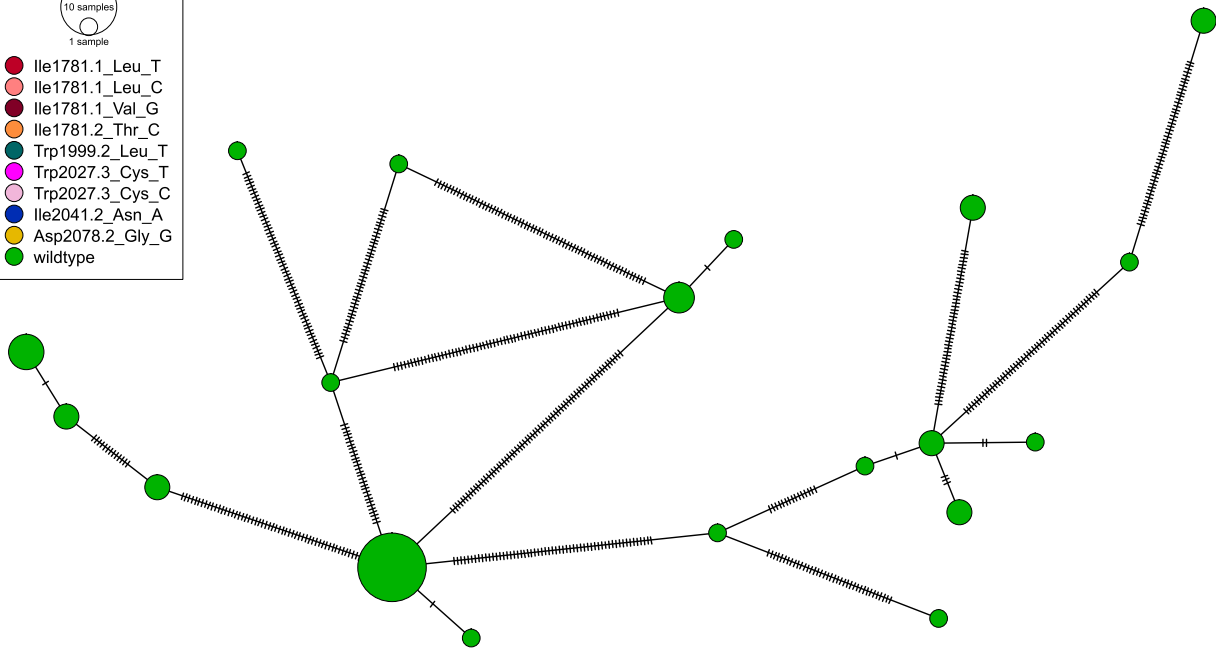




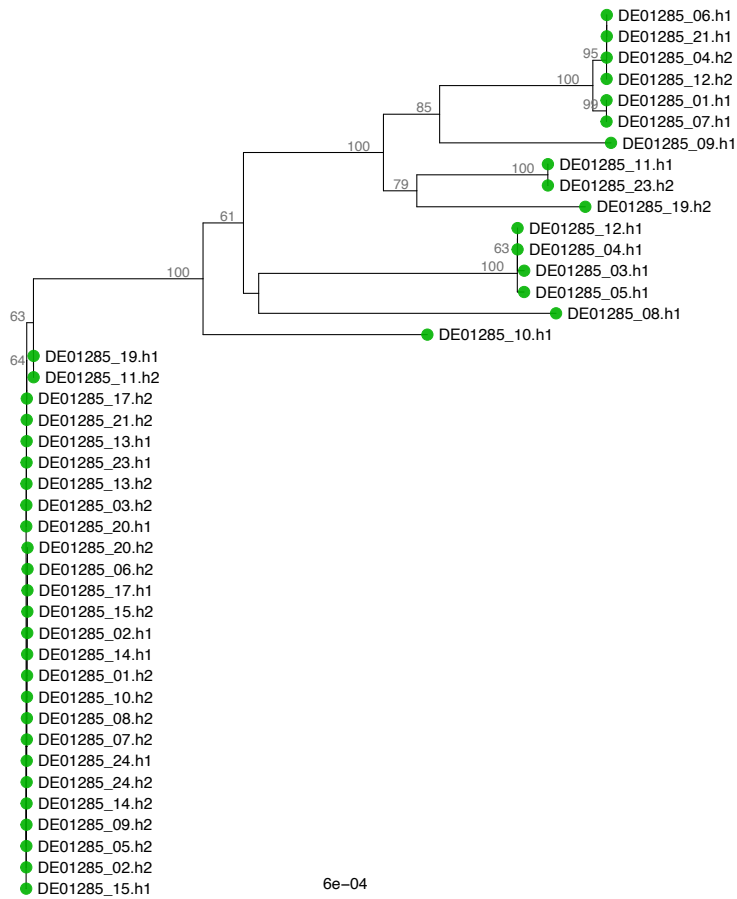
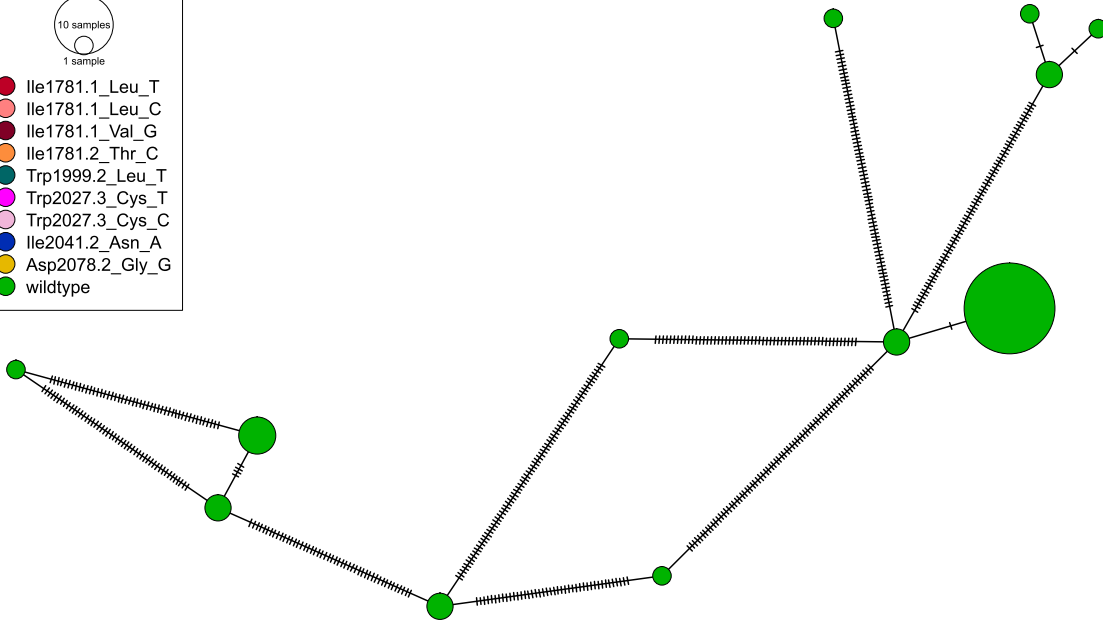
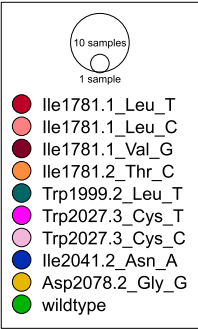
CH05961





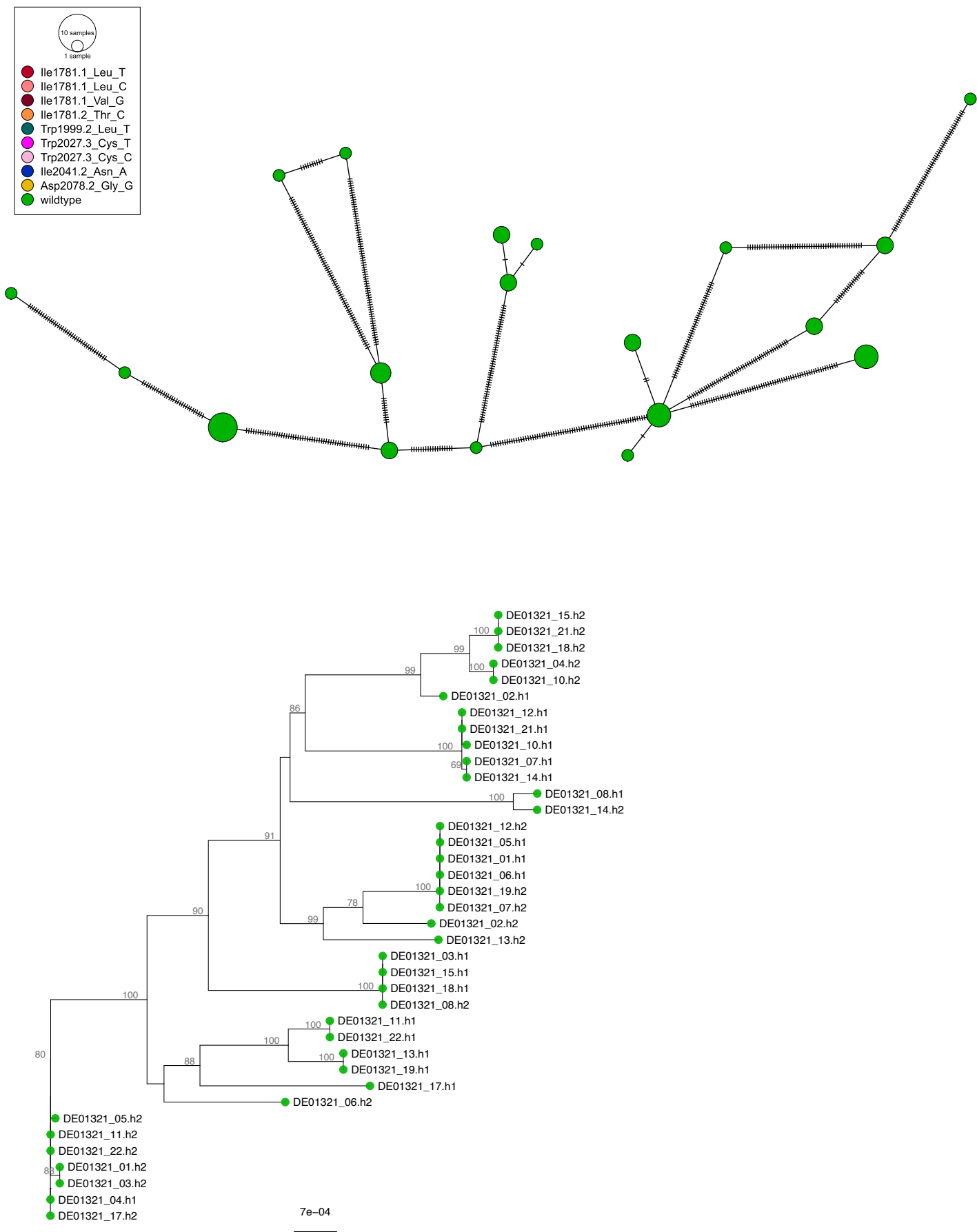


DE01285

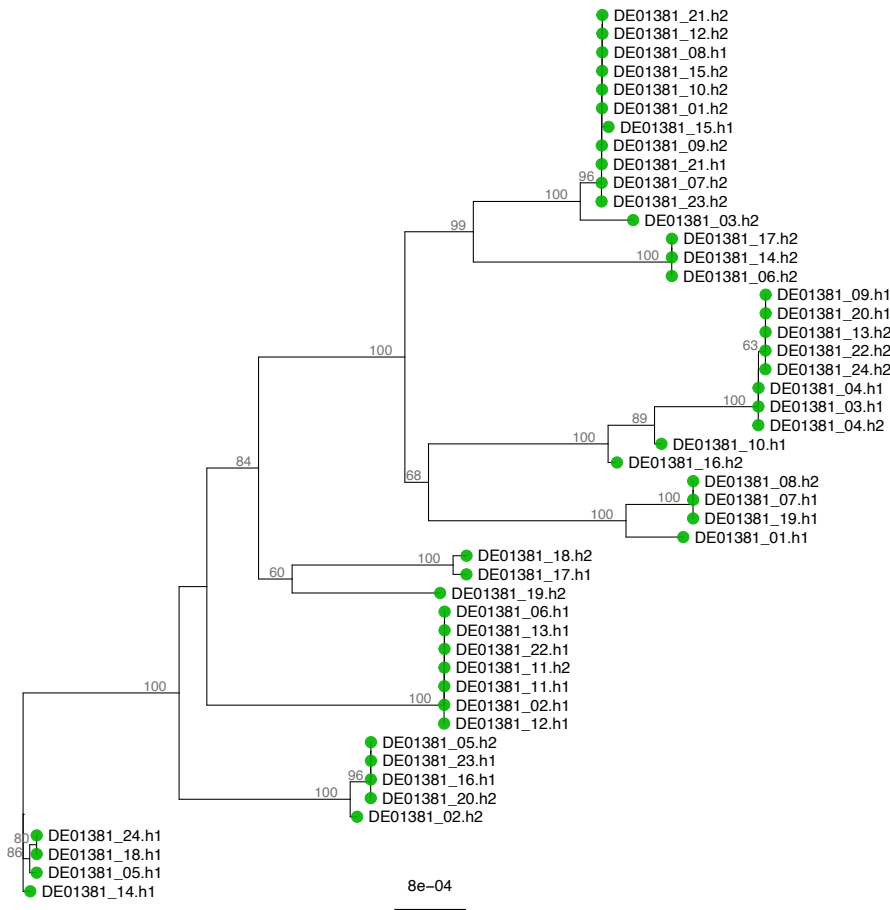
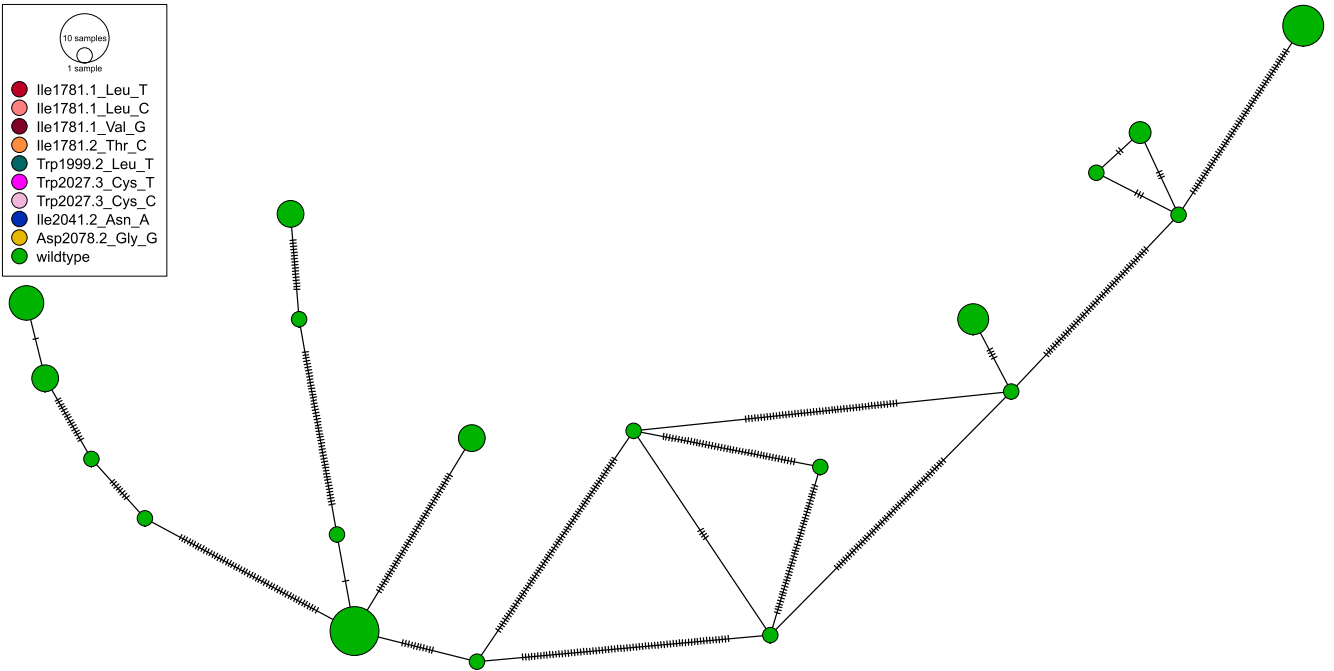


6e-04

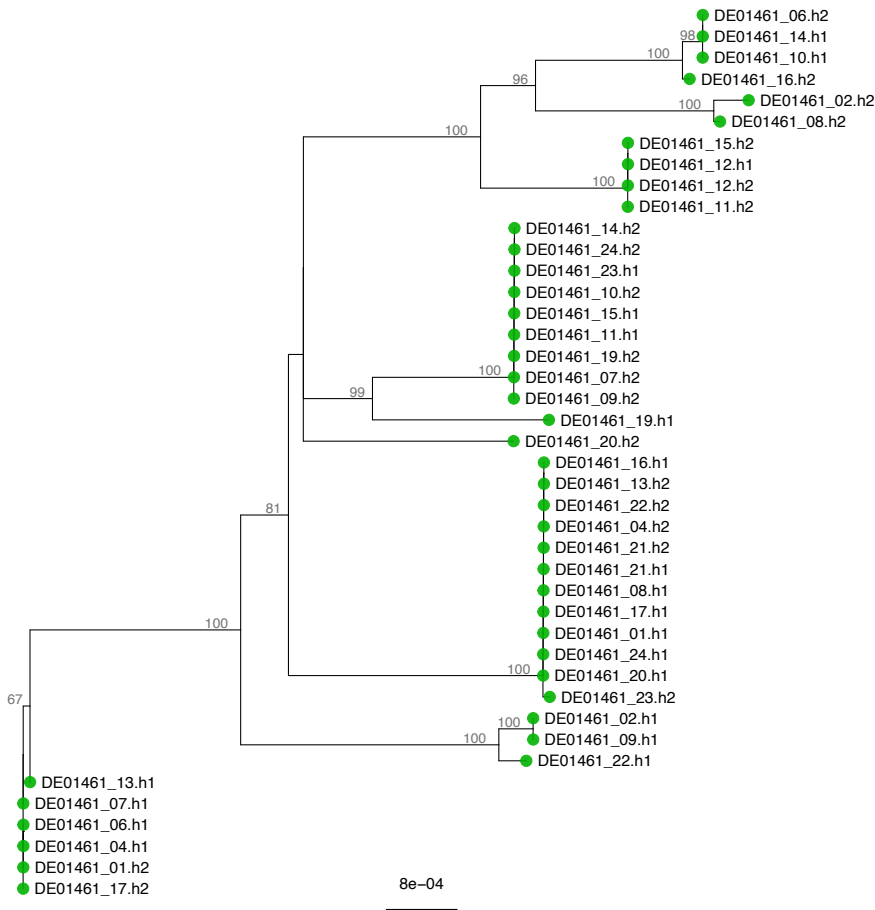
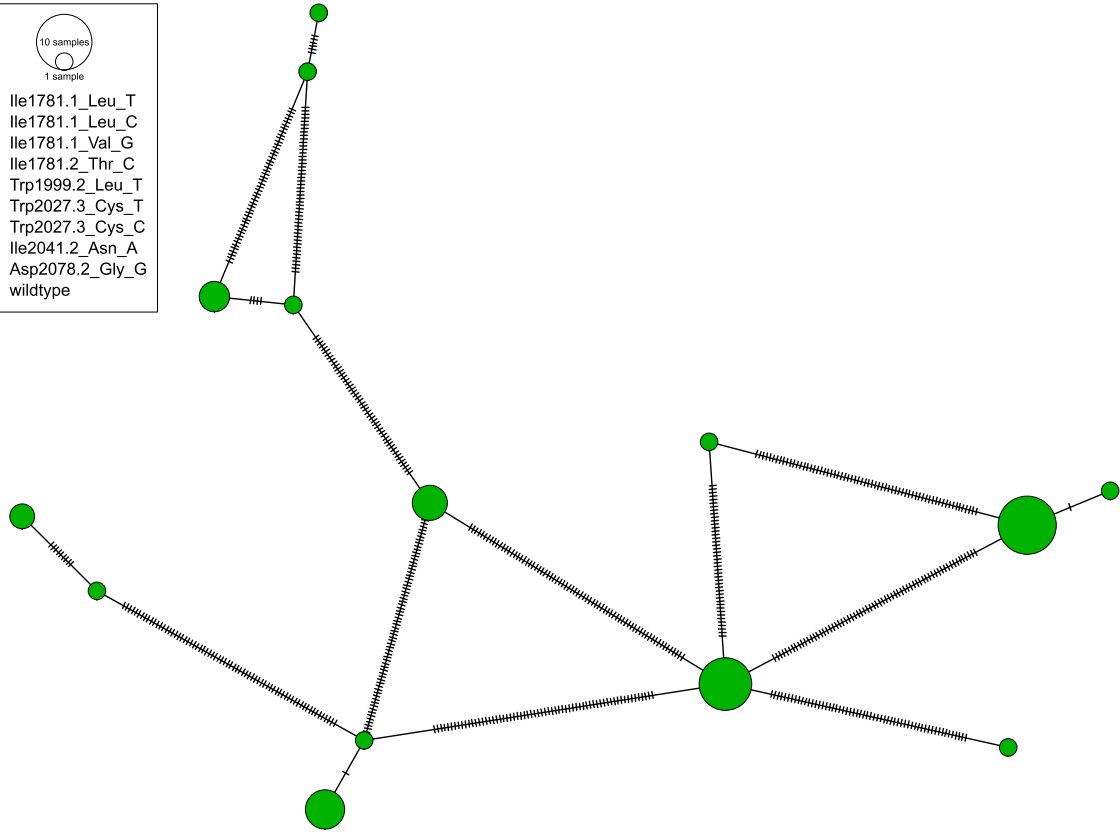
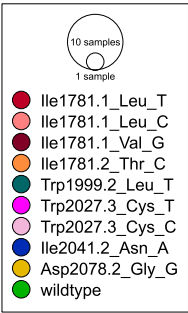
DE01321



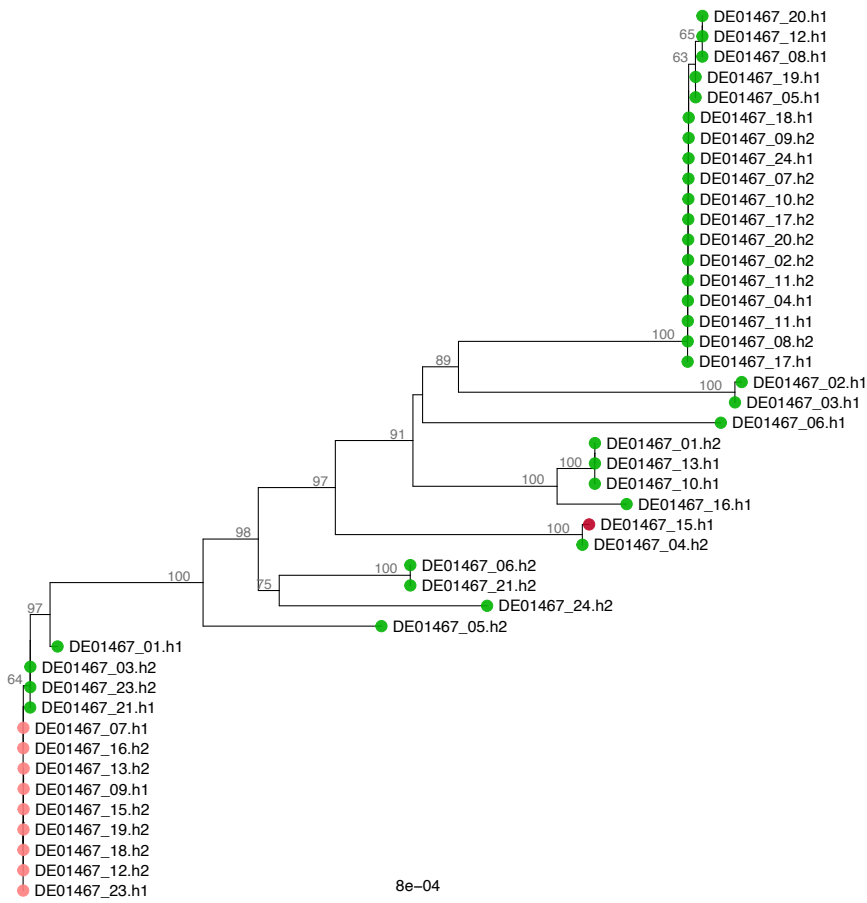
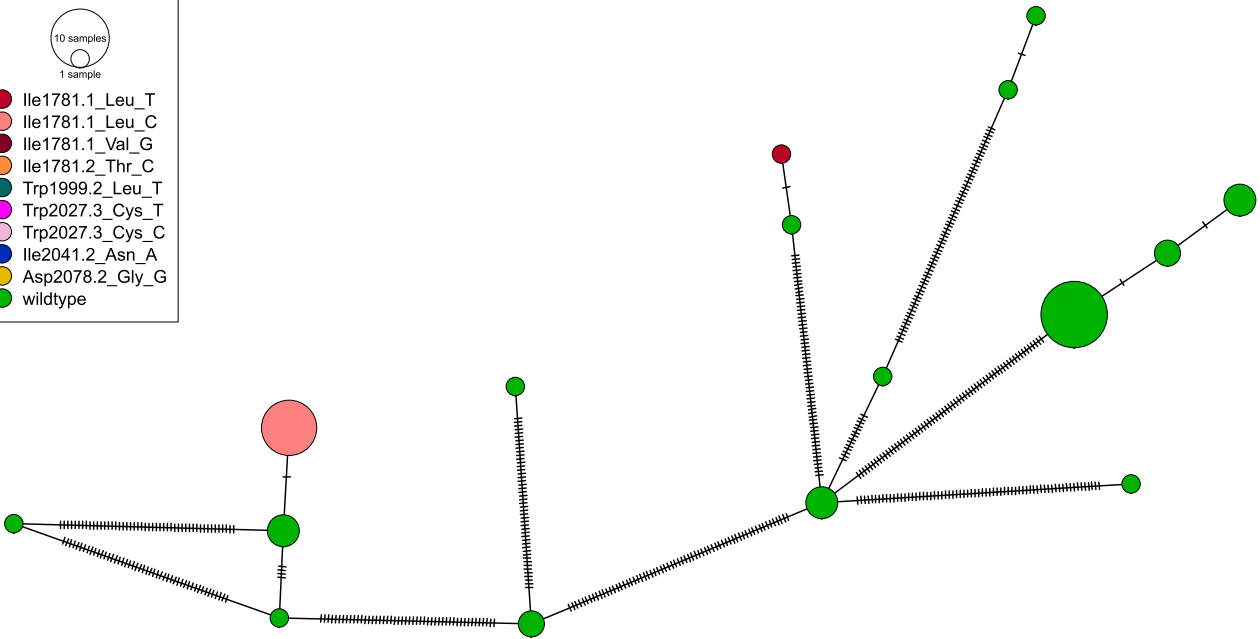
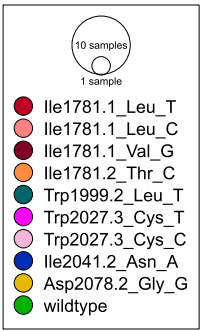
DE01381



DE01461

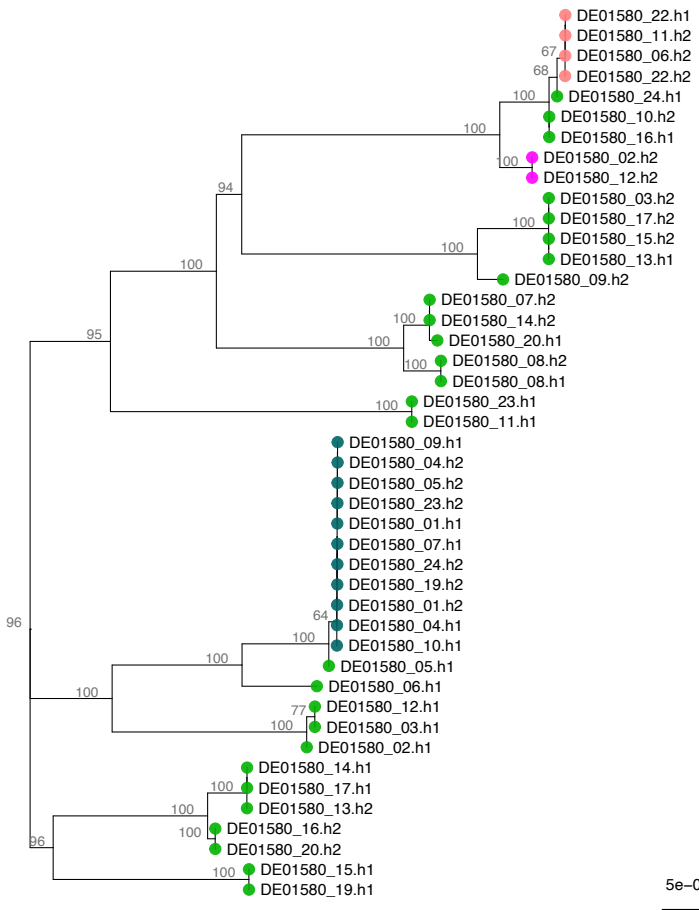
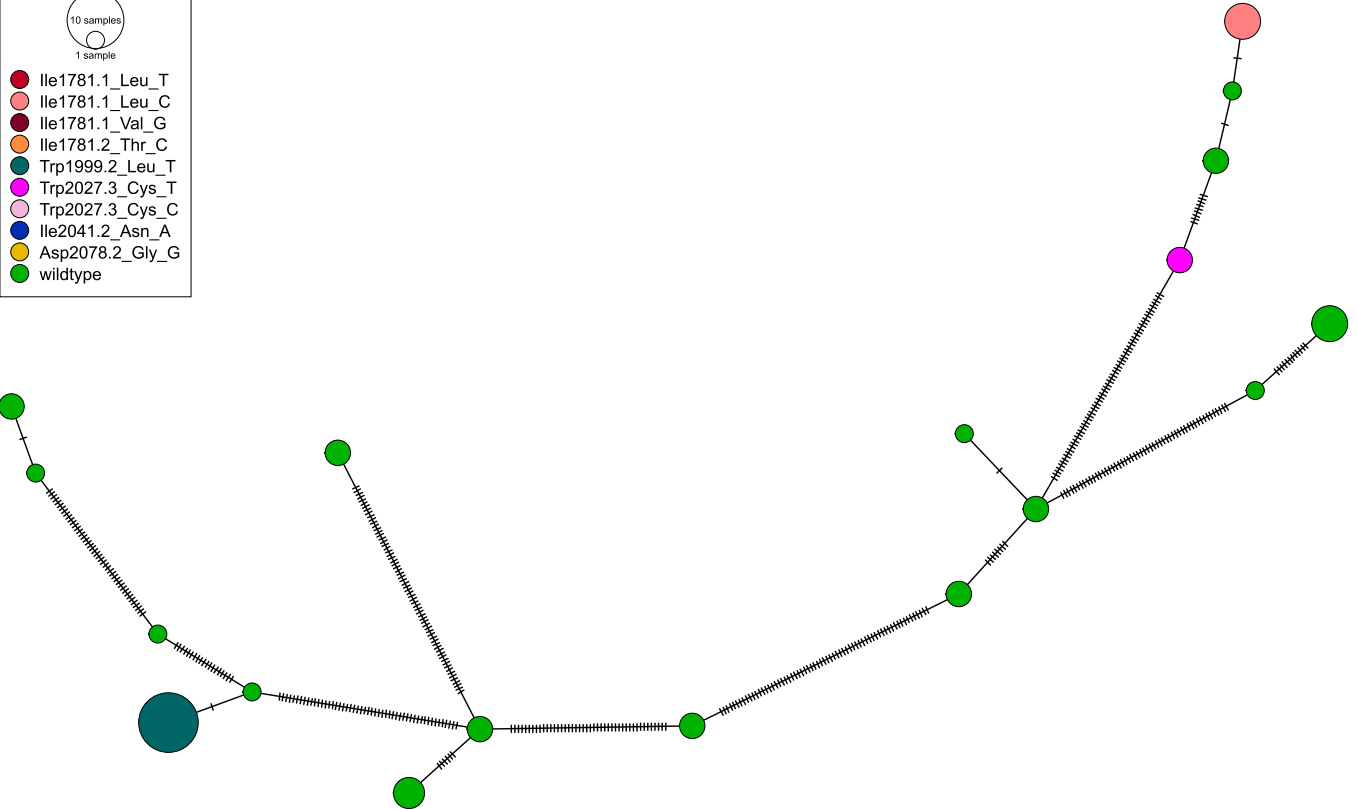
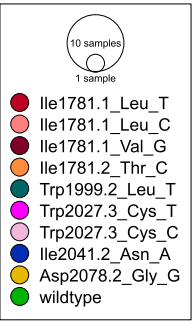


DE01467



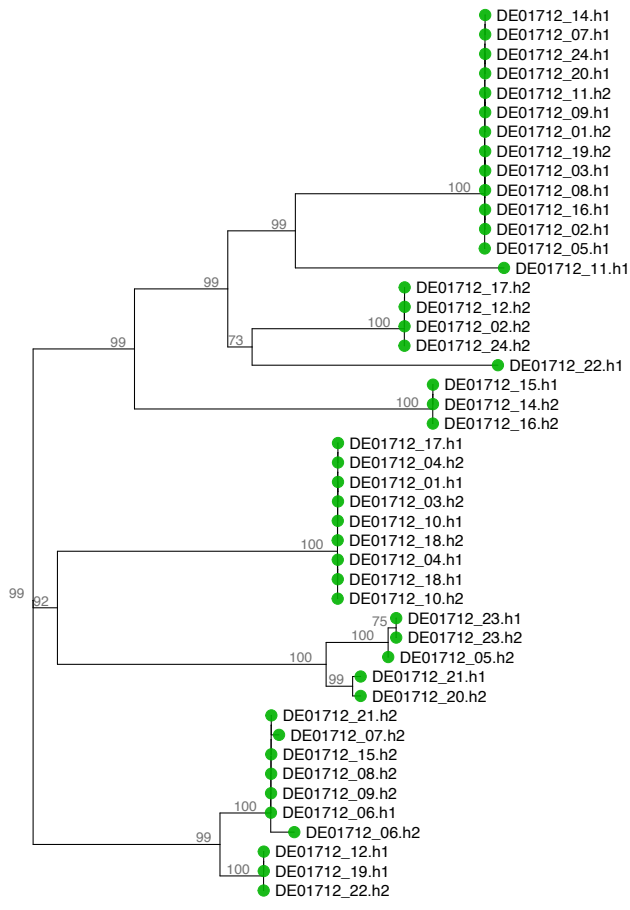
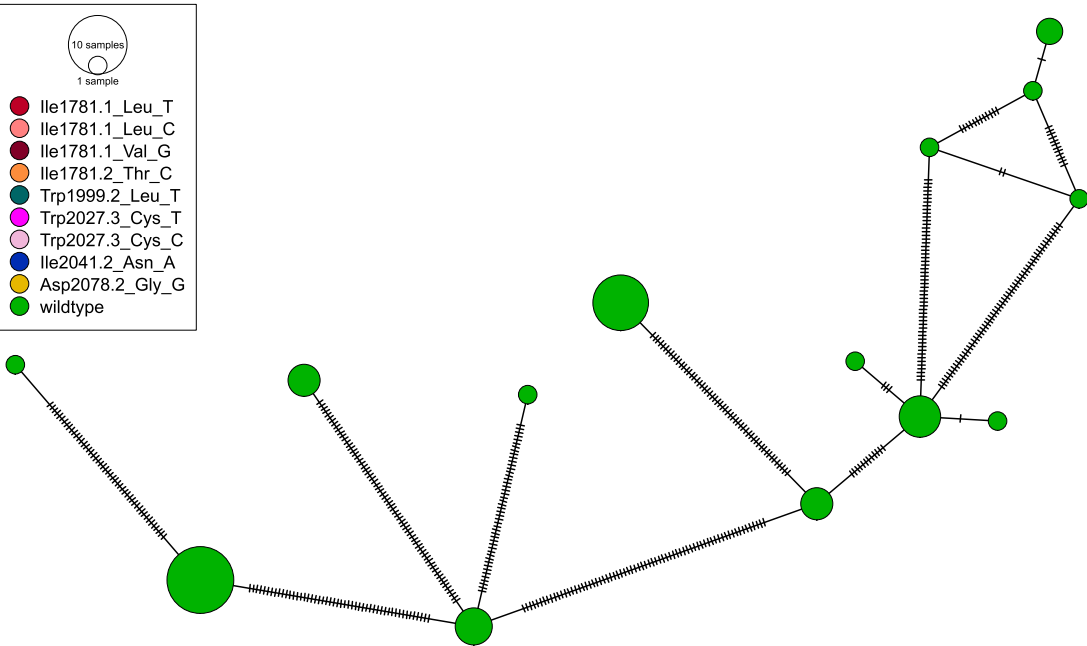
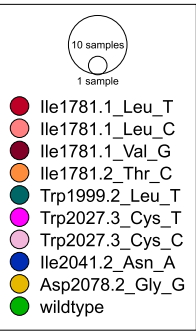


DE01580



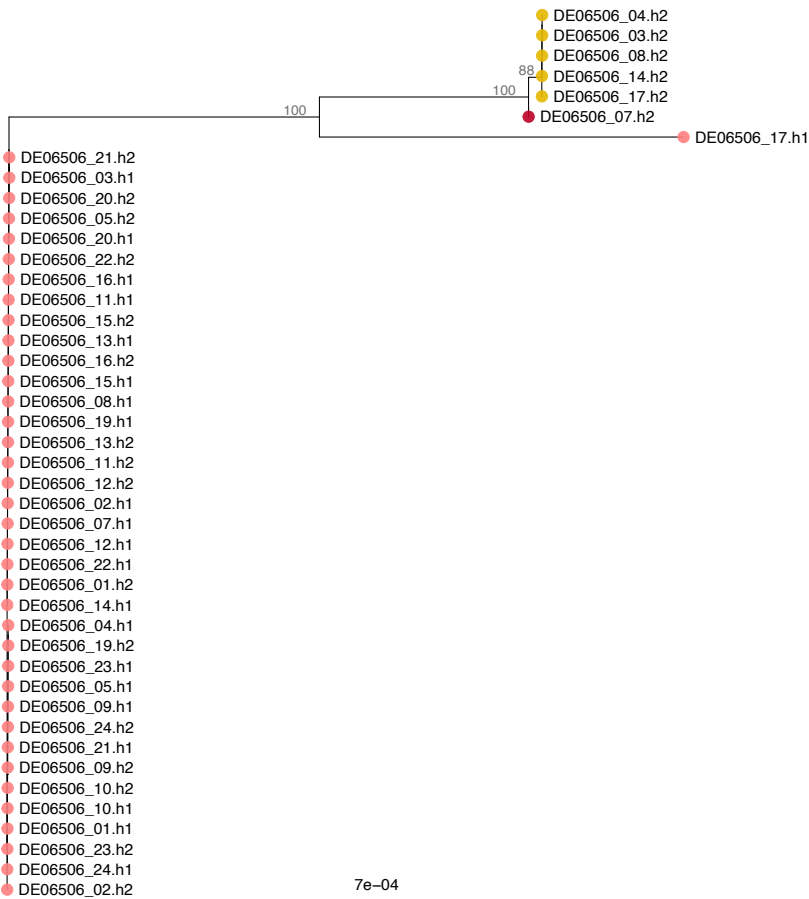
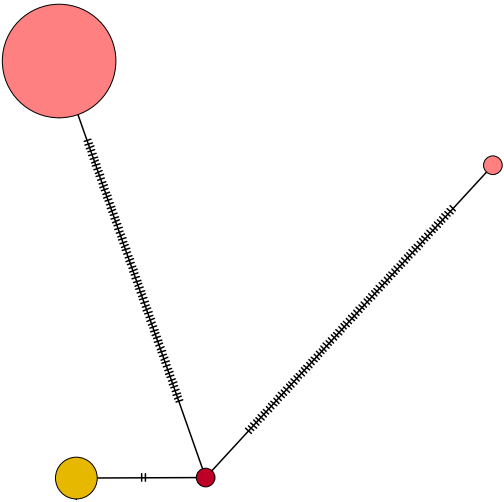
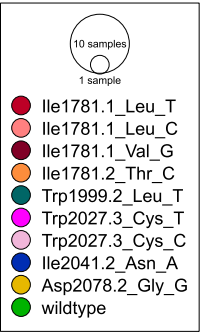
5e-04

DE01712



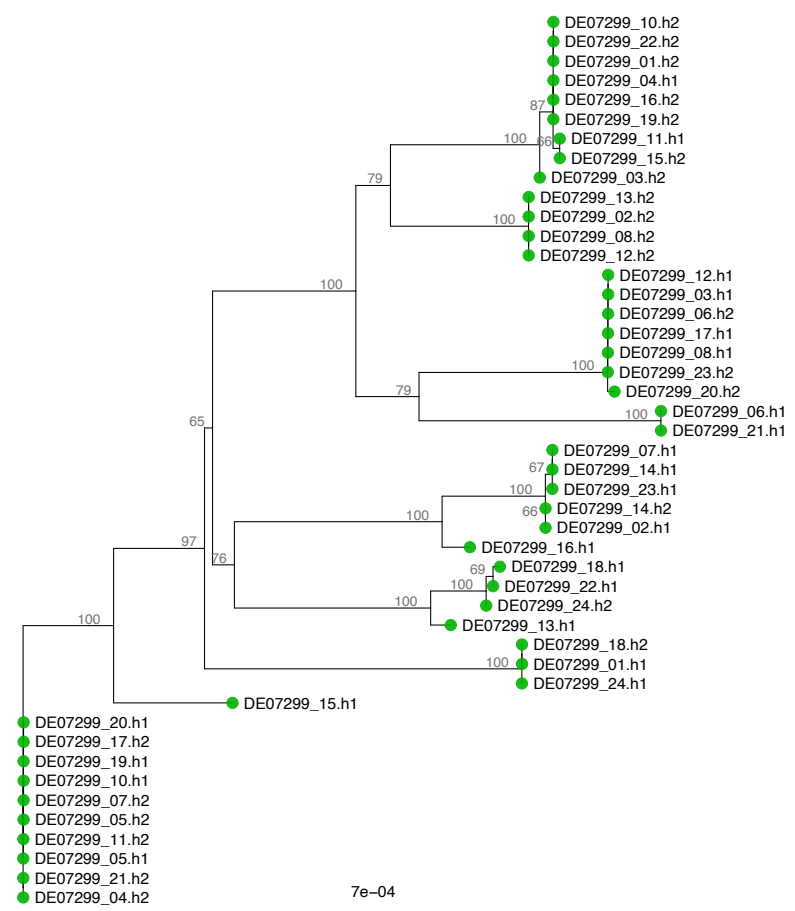
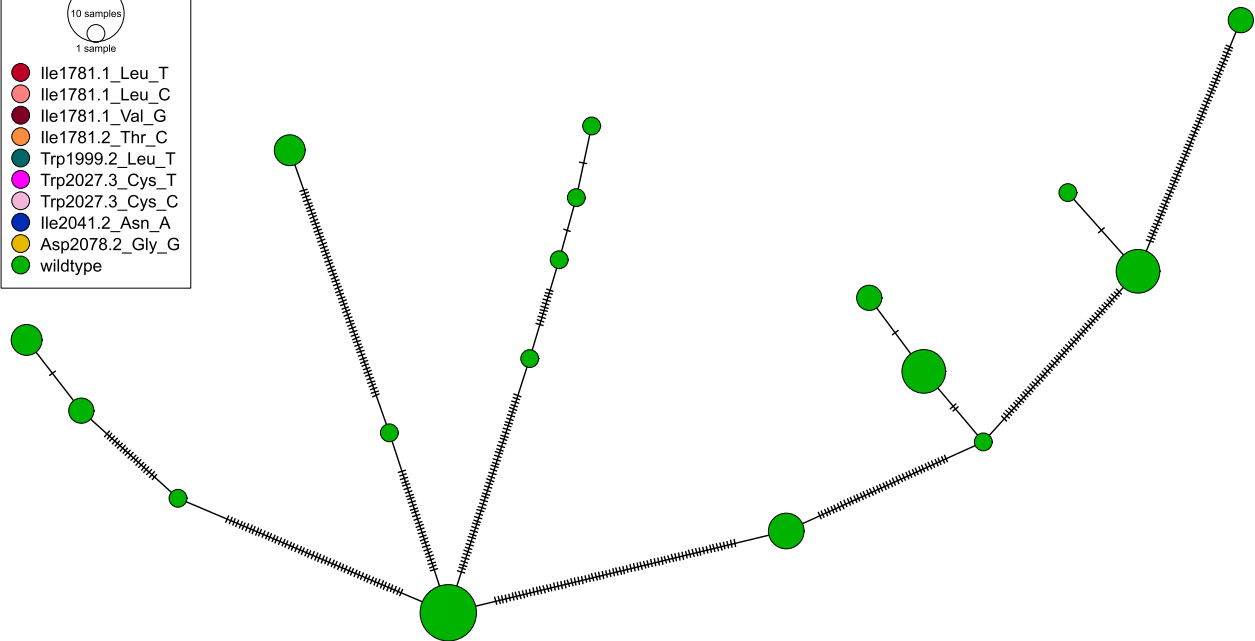
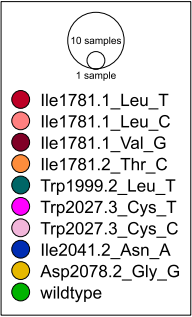
4e-04

DE06506

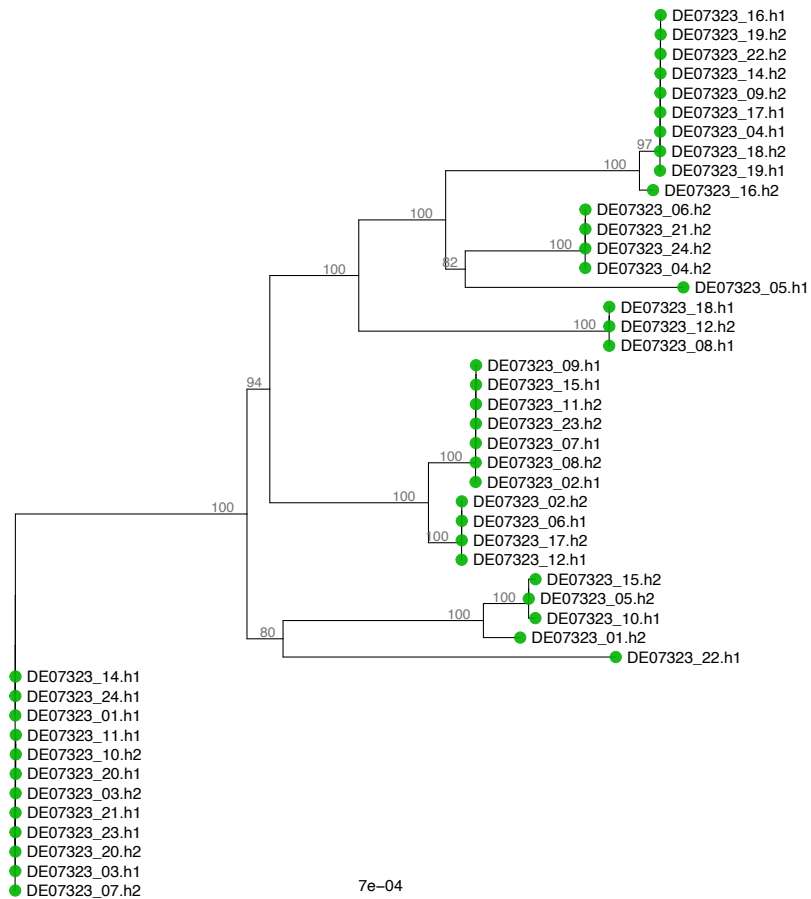
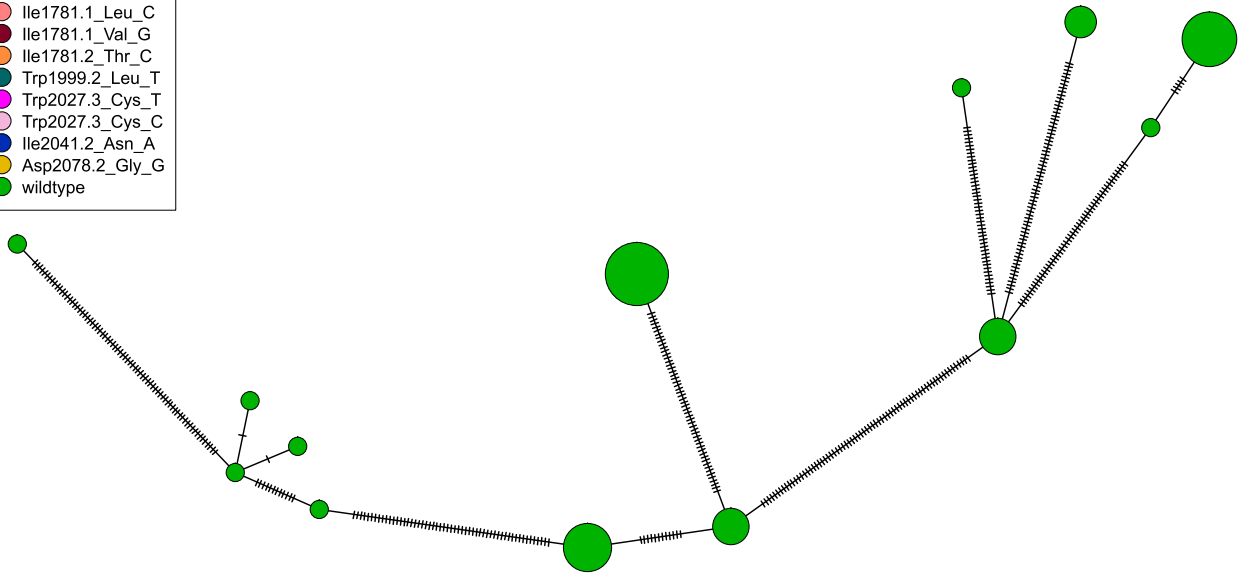
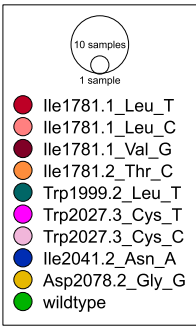


7e-04

DE07299

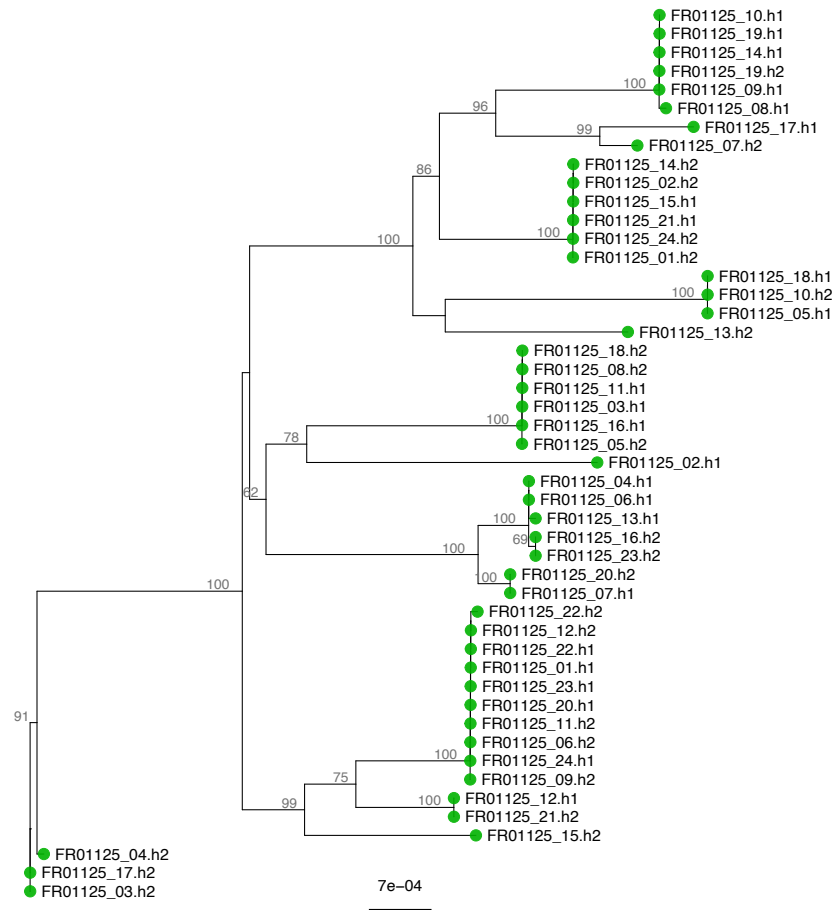
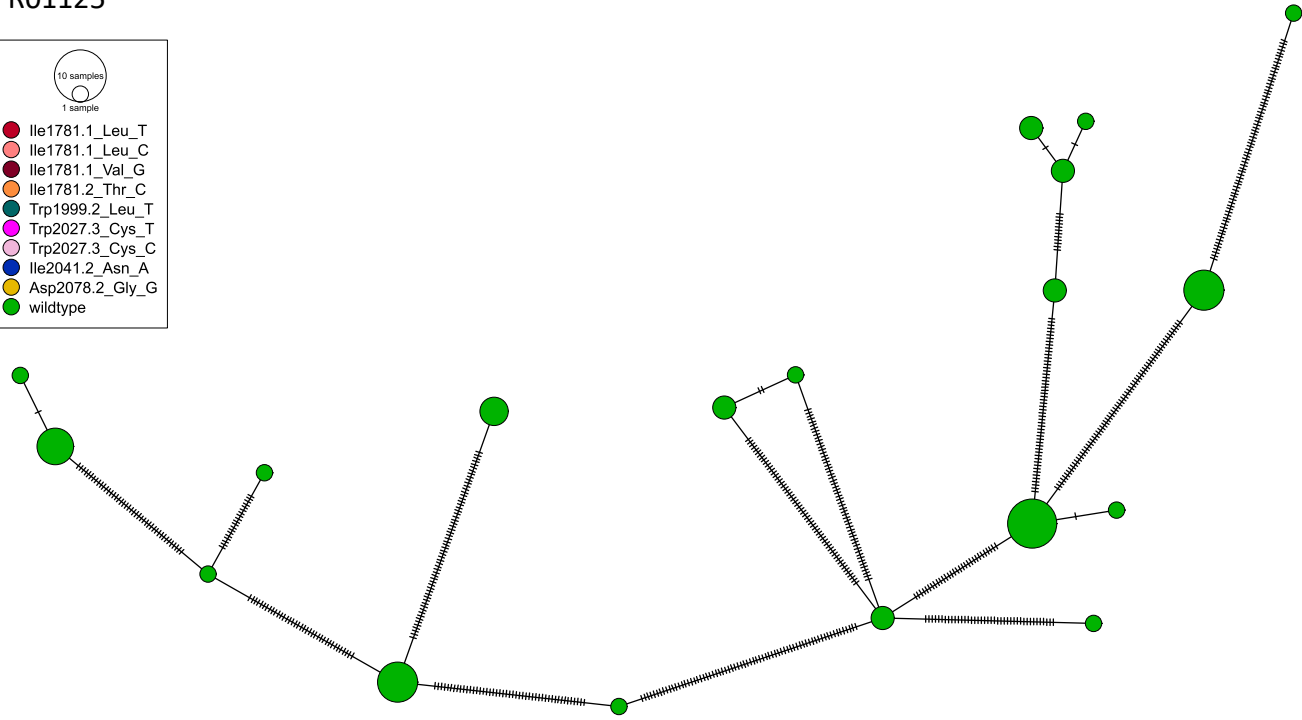
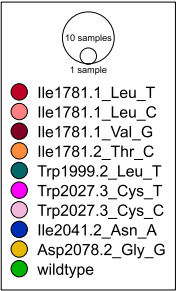


DE07323

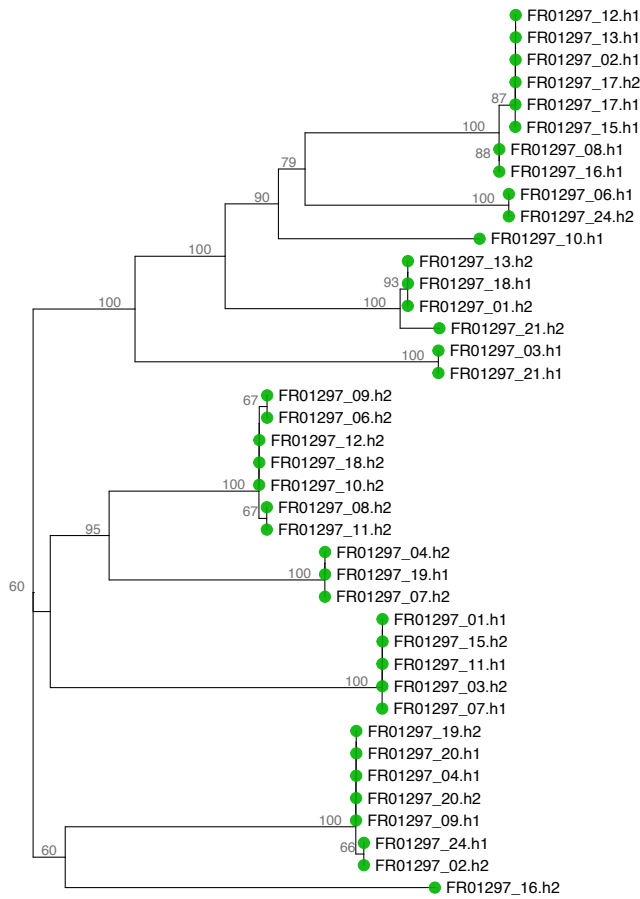
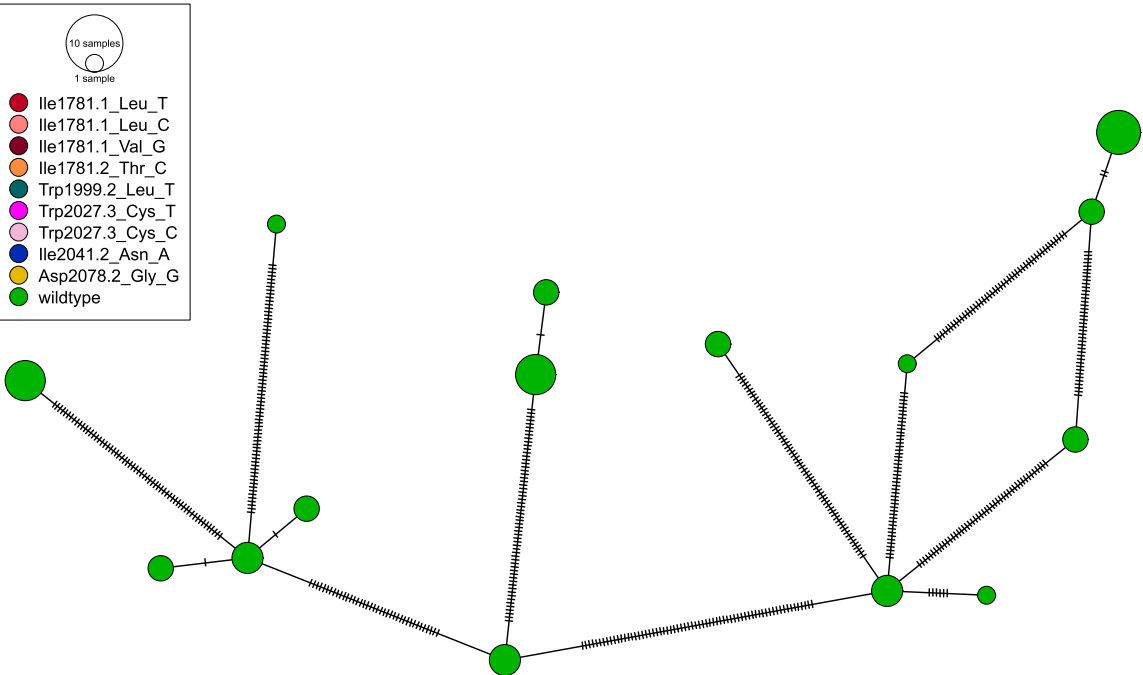


7e-04

FR01125

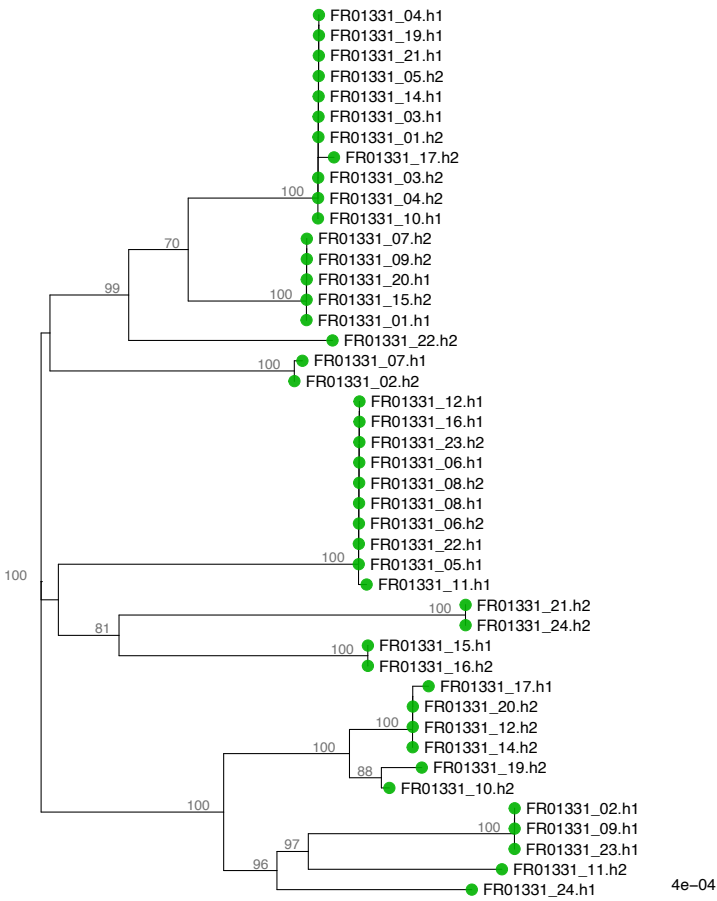
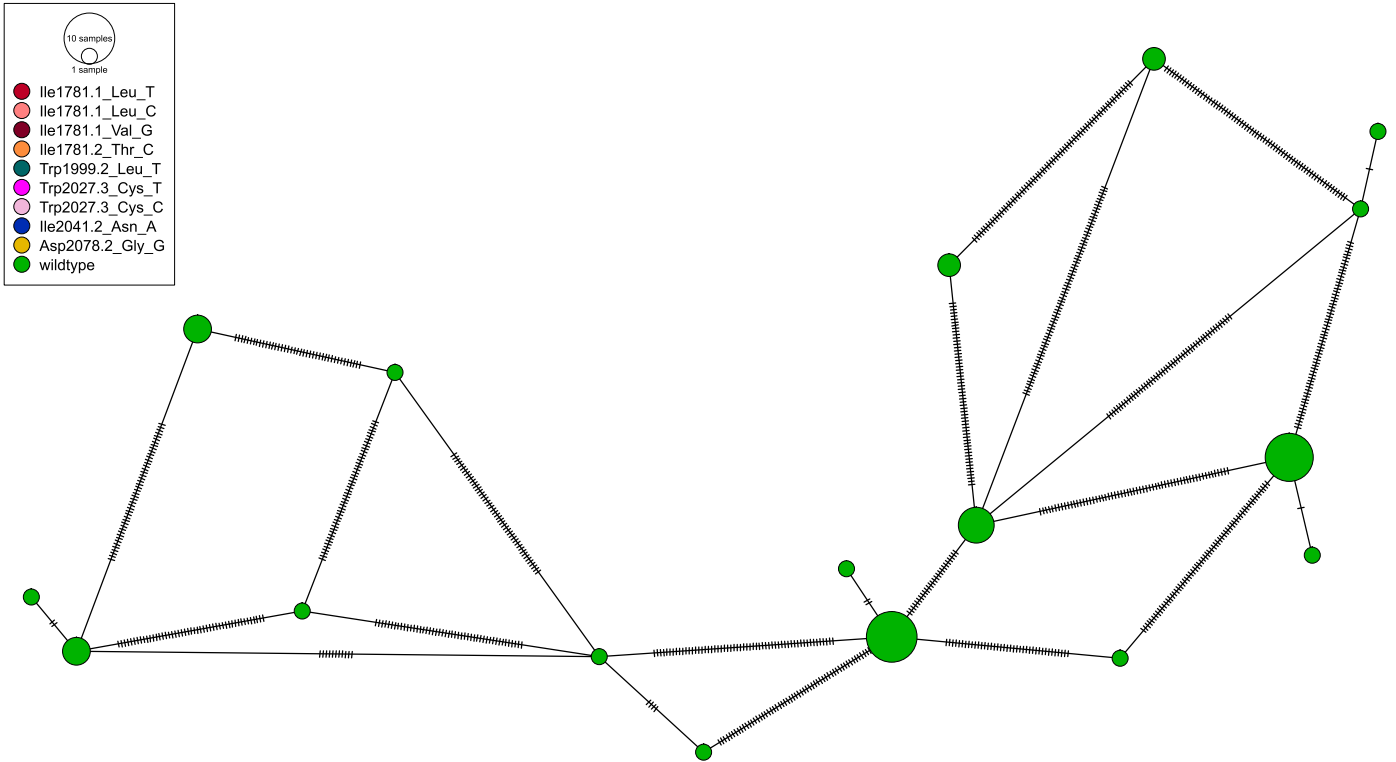


FR01297



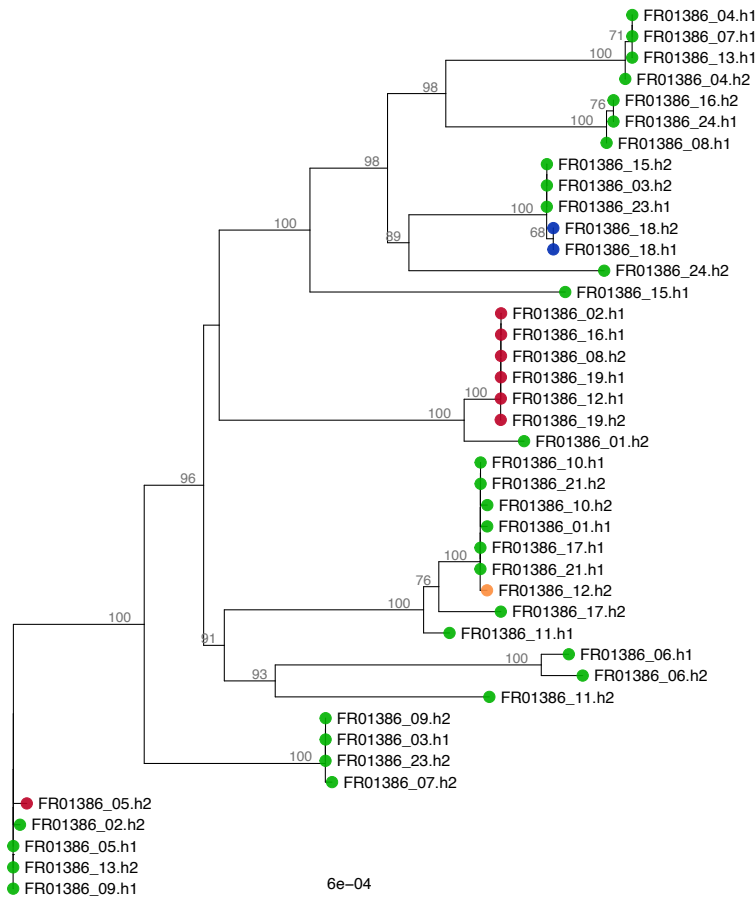
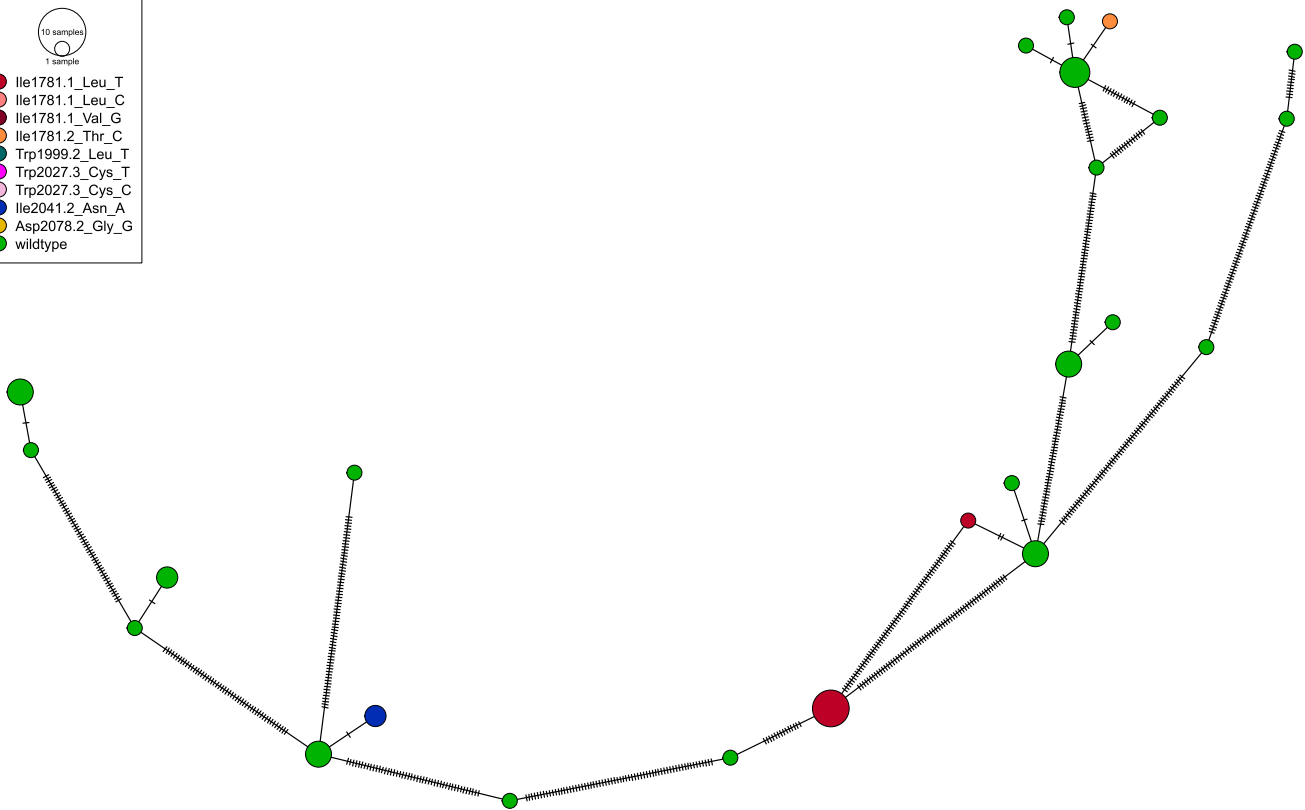
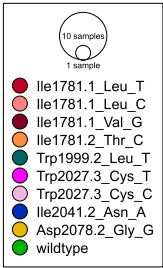
4e-04

## FR01331

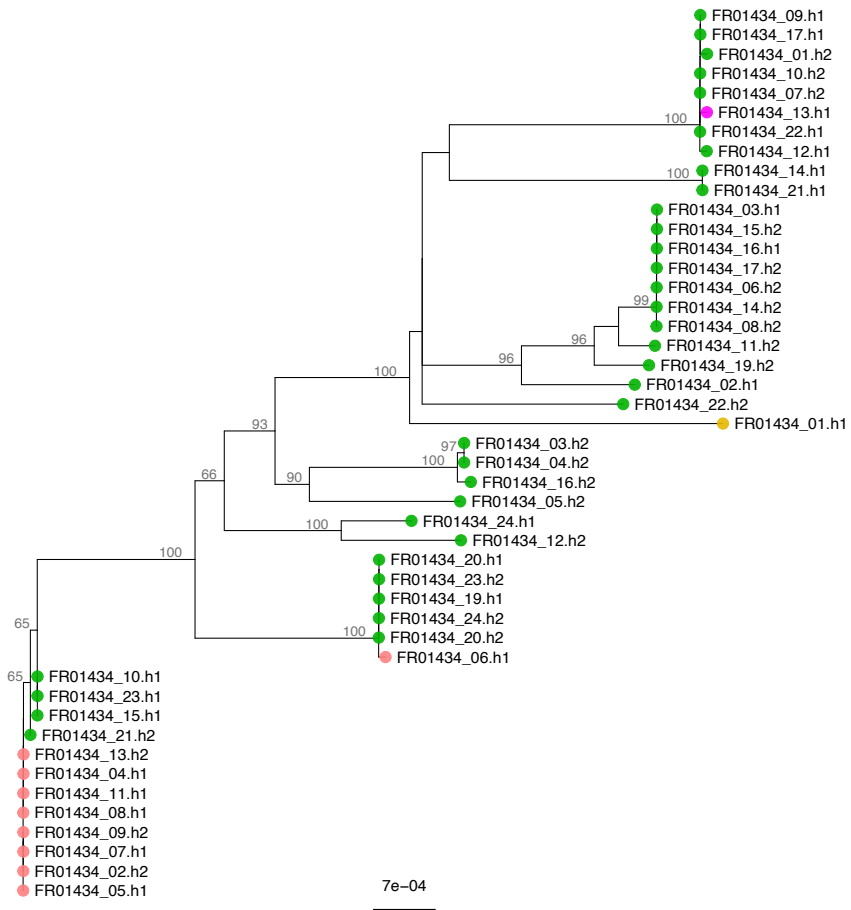
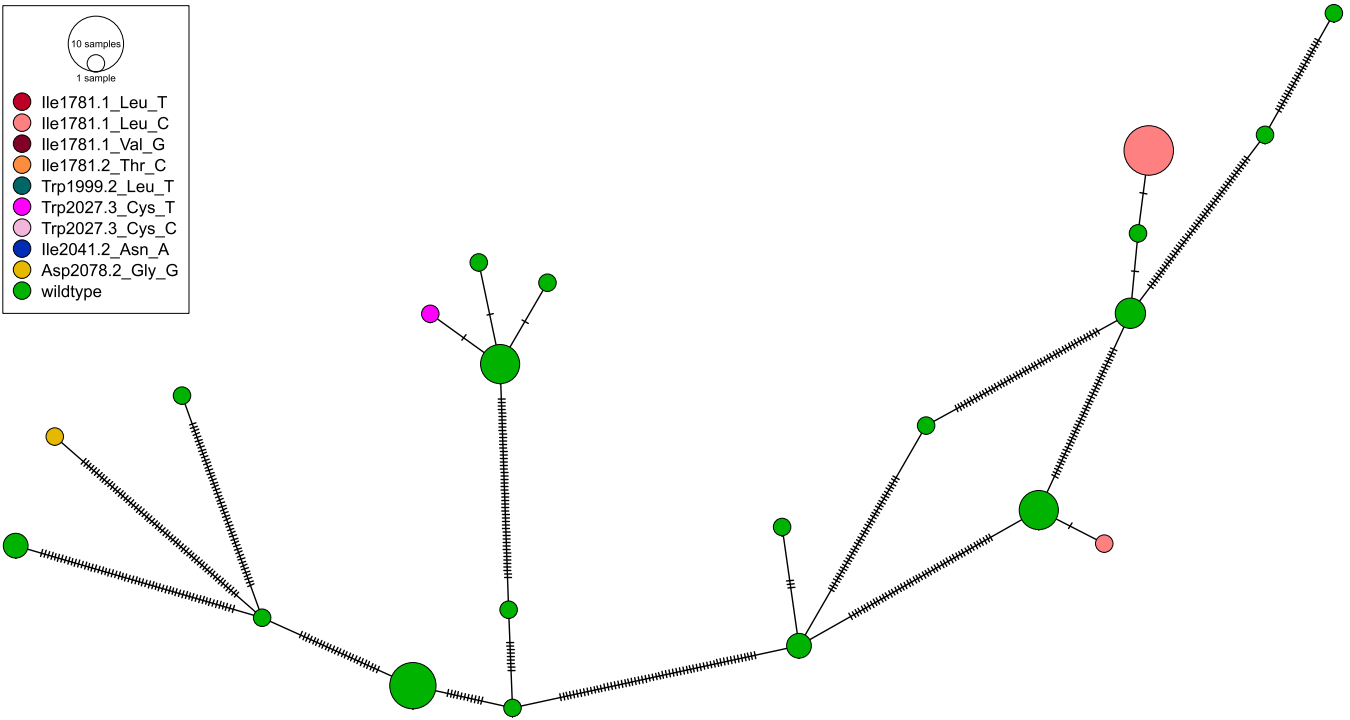
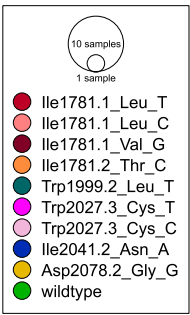




FR01386

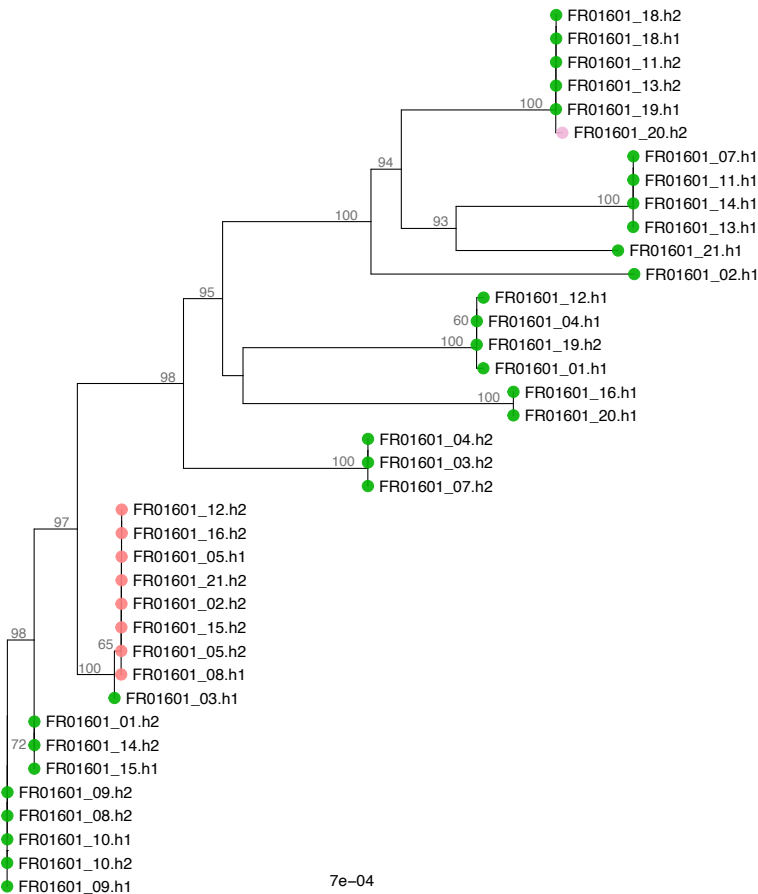
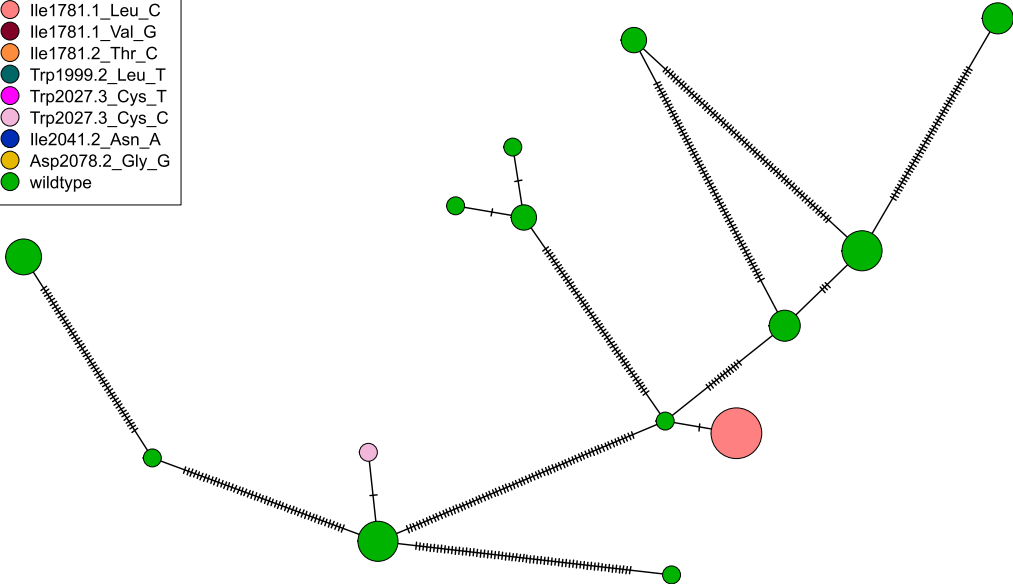
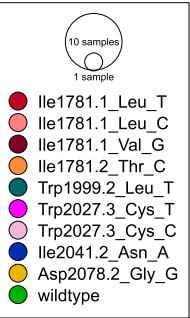


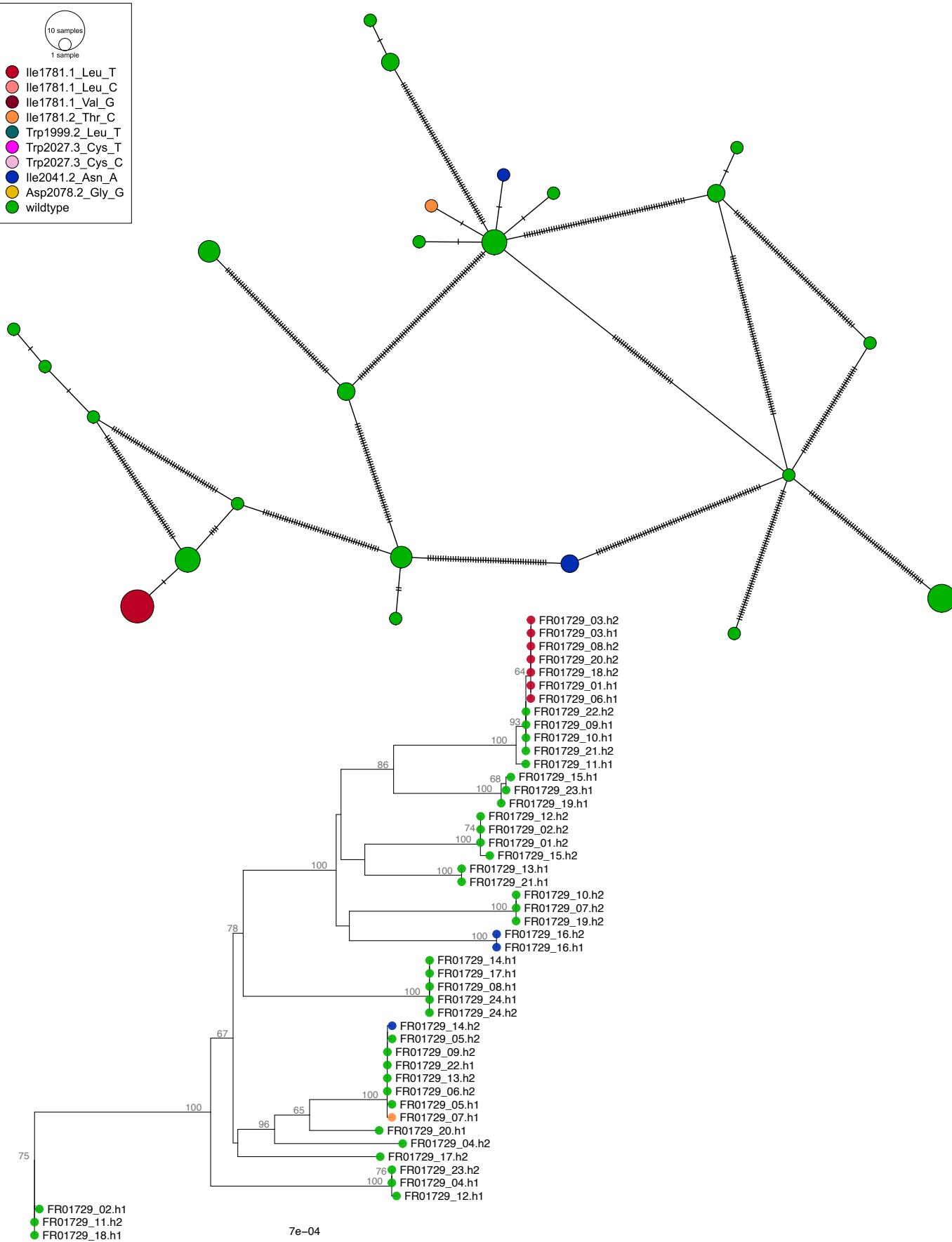
FR01434

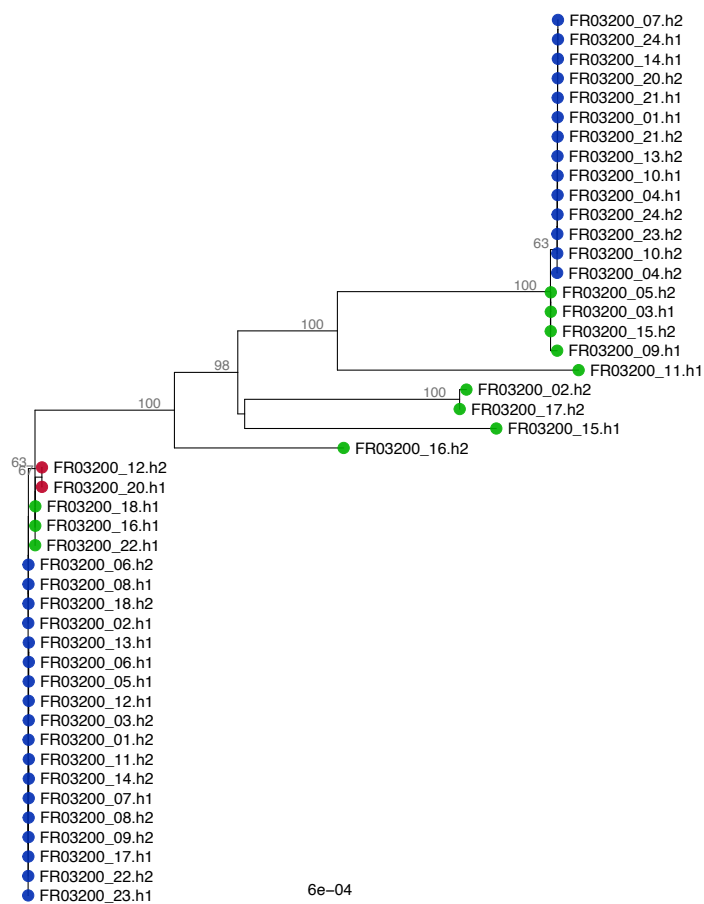
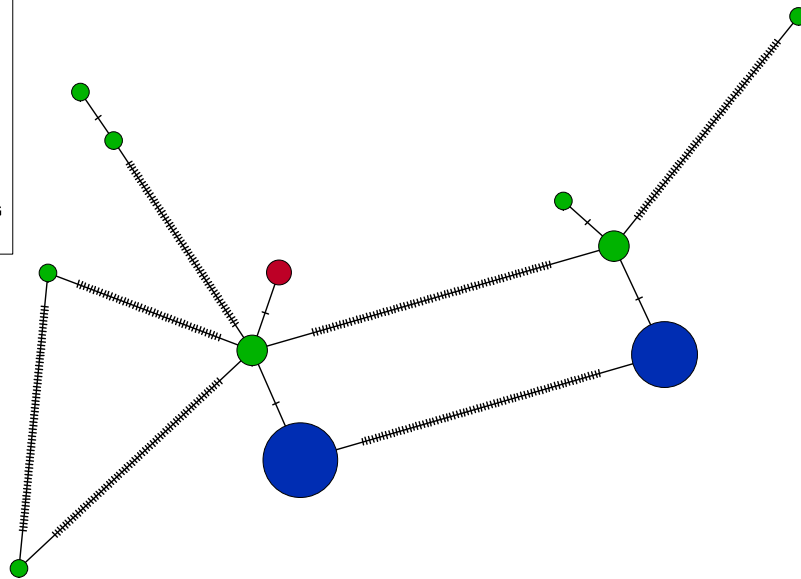


7e-04

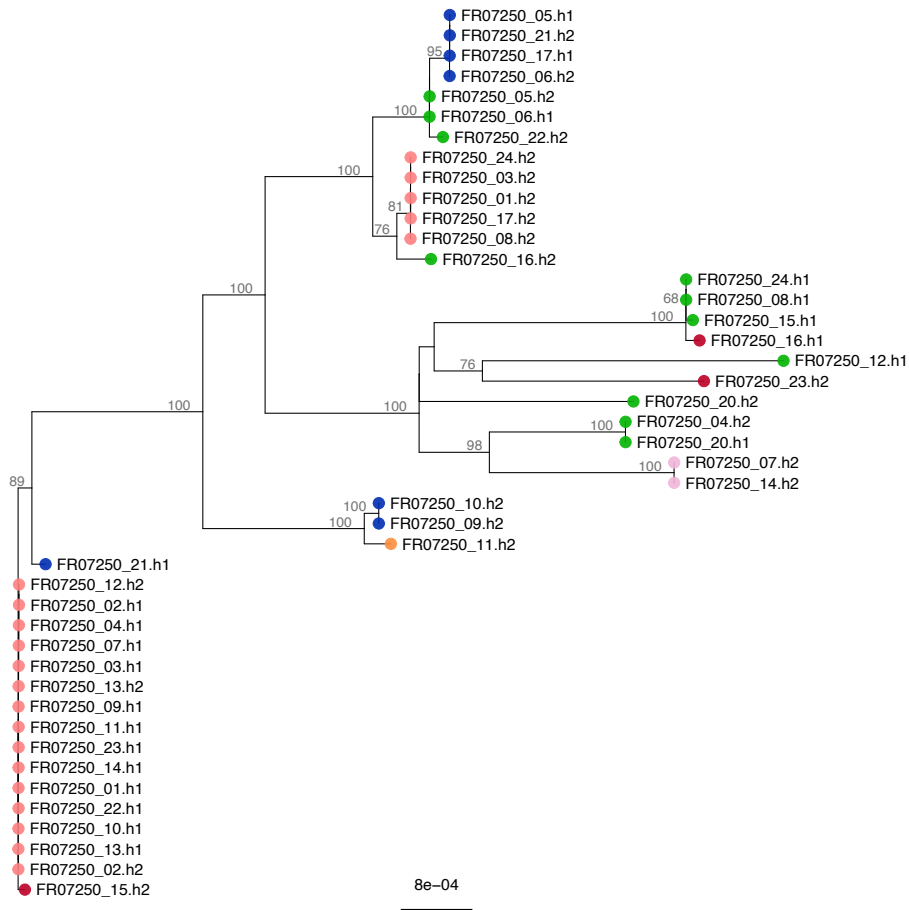
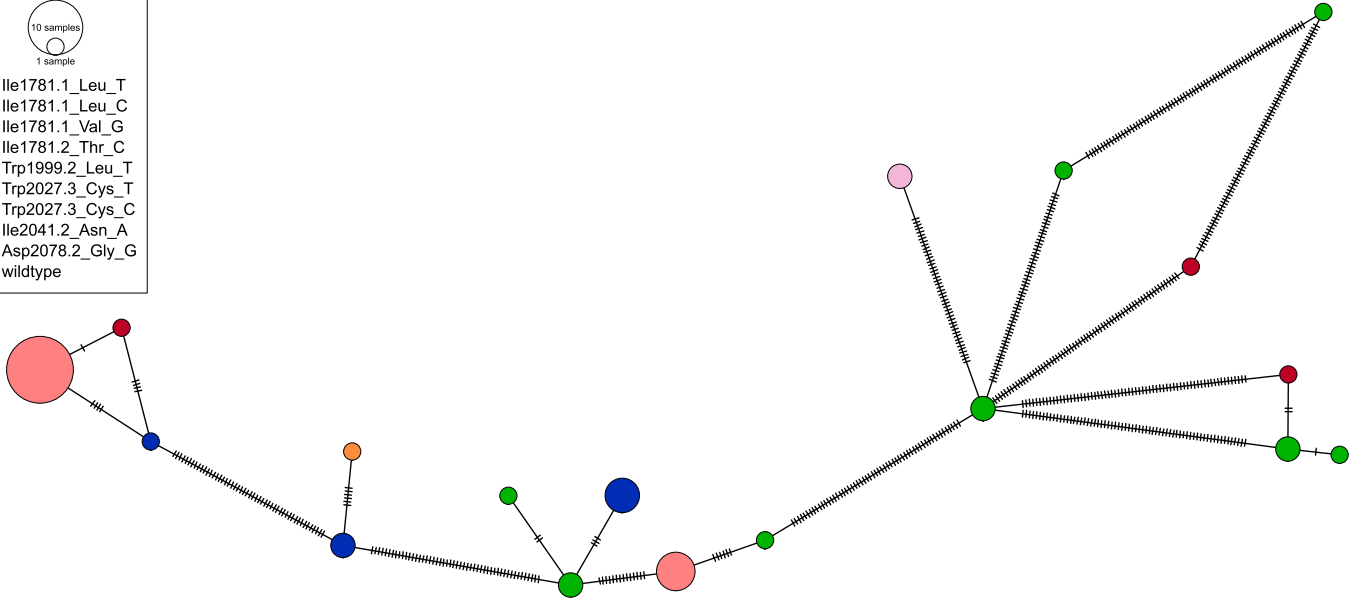
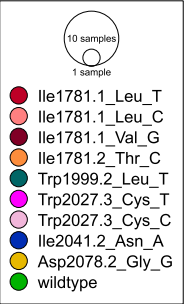
FR01601



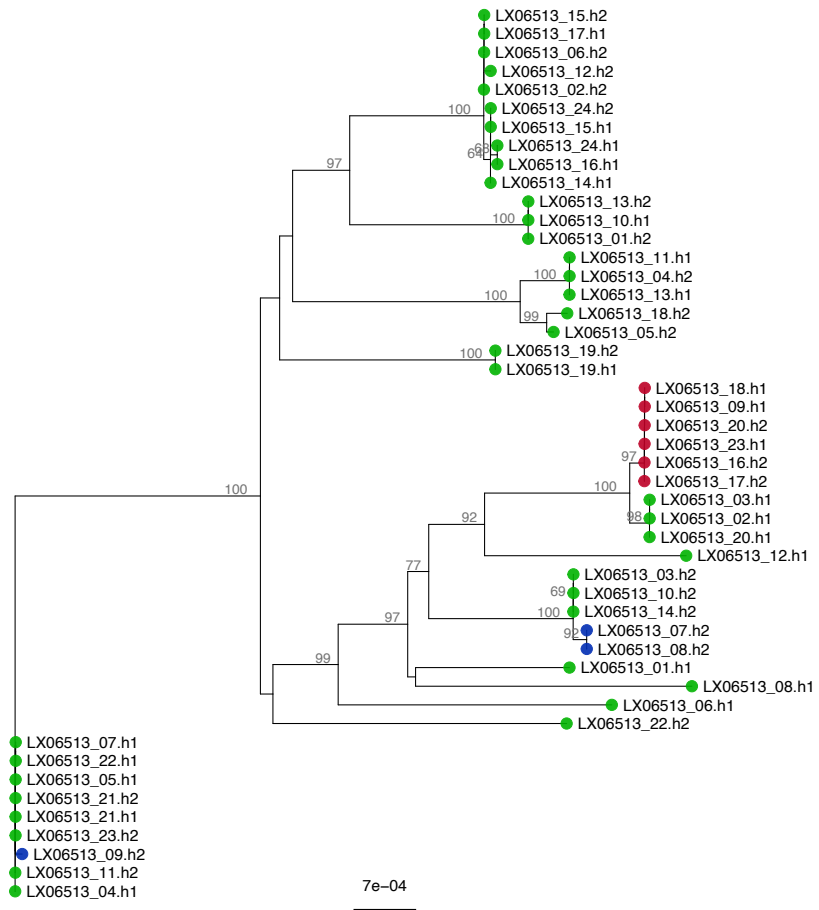
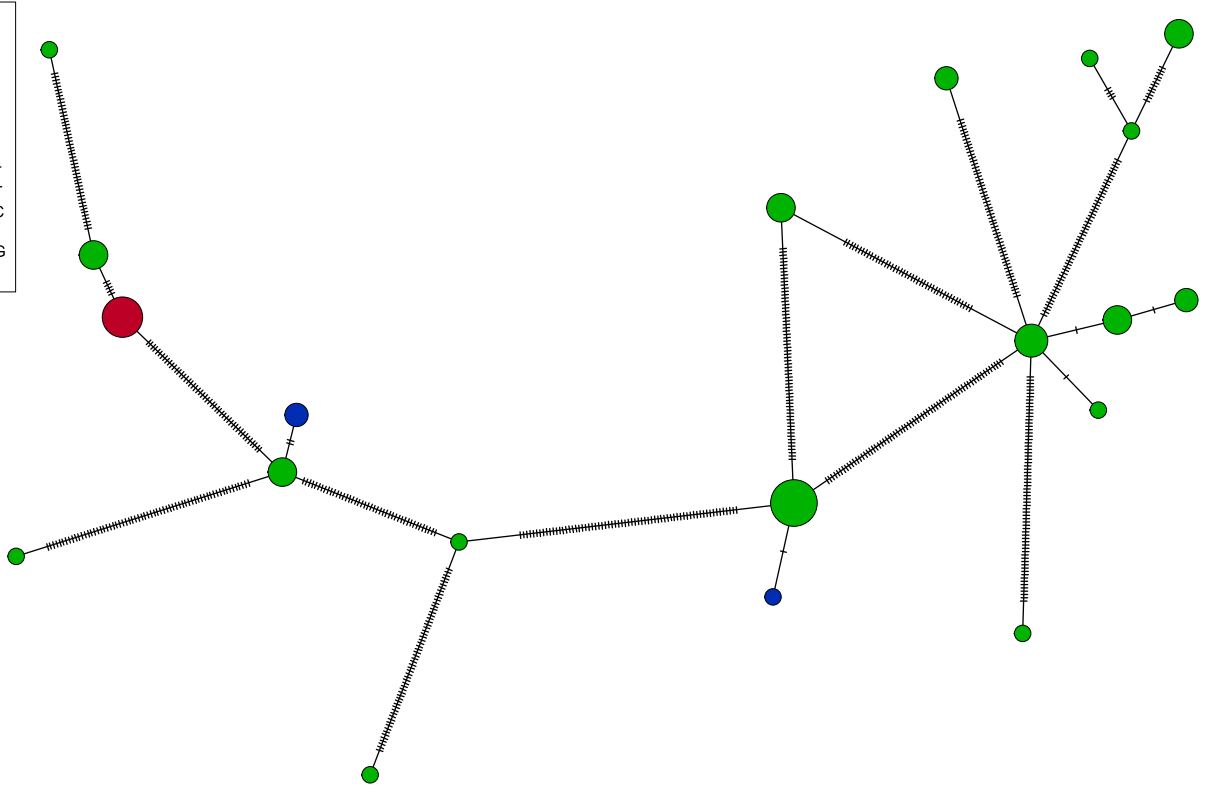
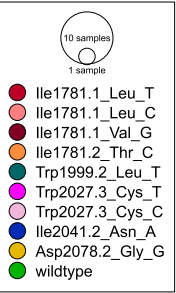




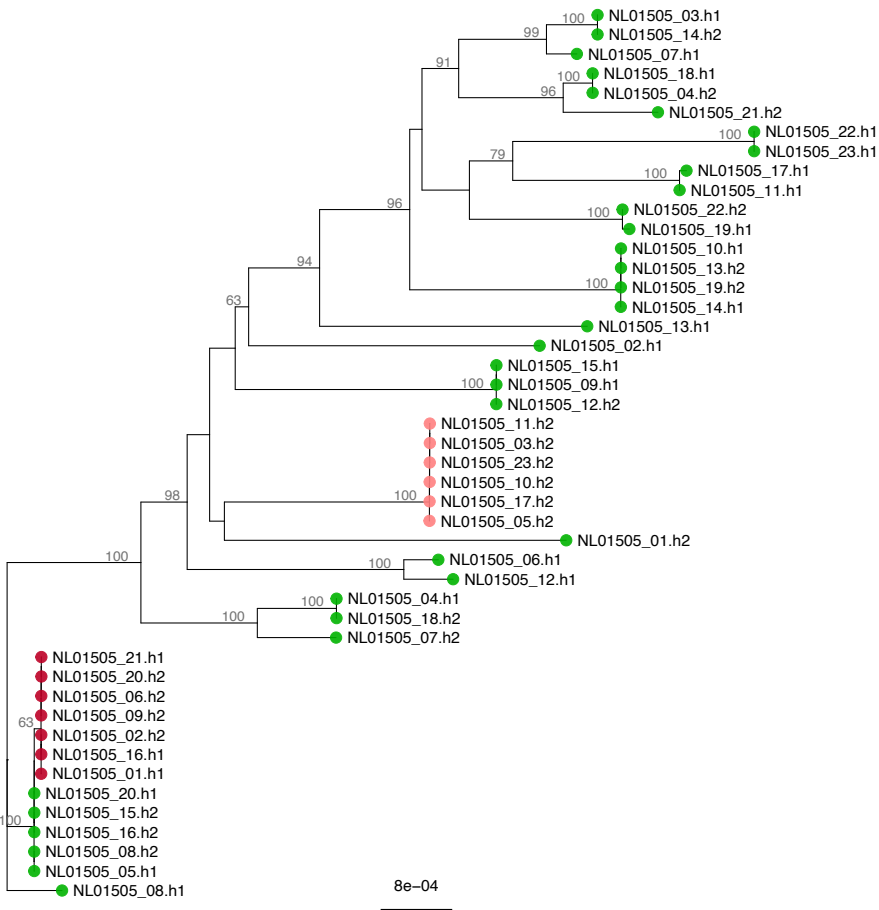
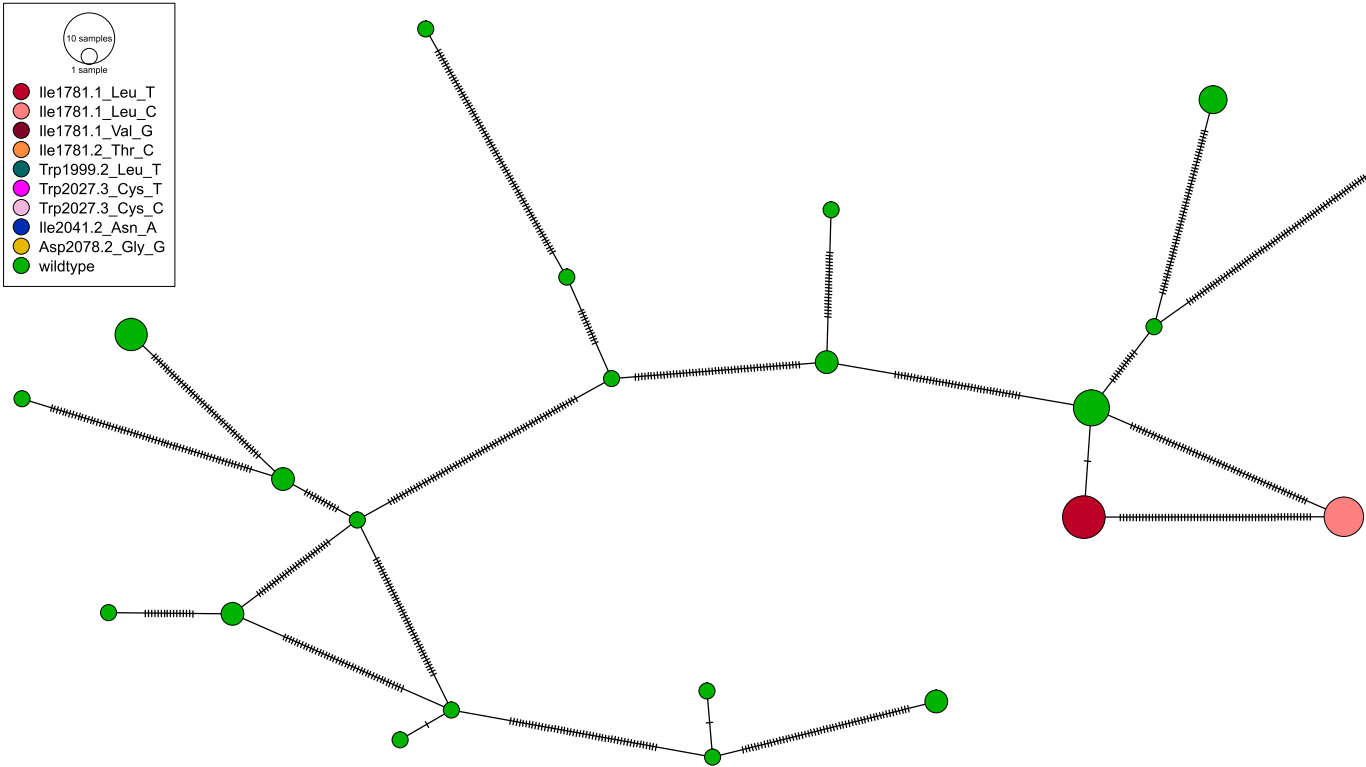
FR07250



LX06513

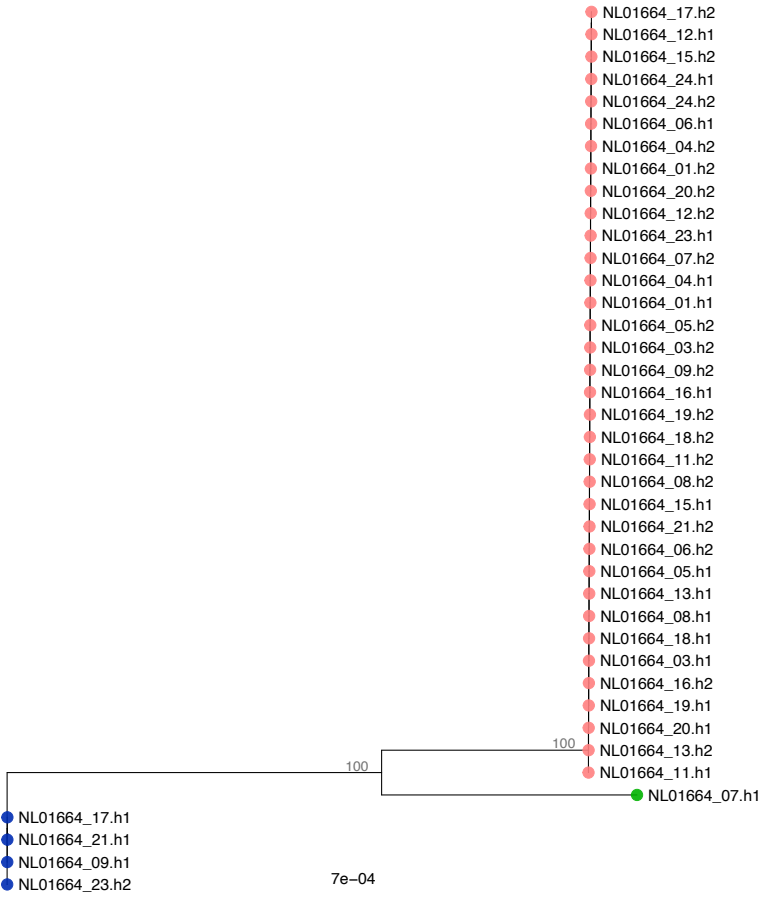
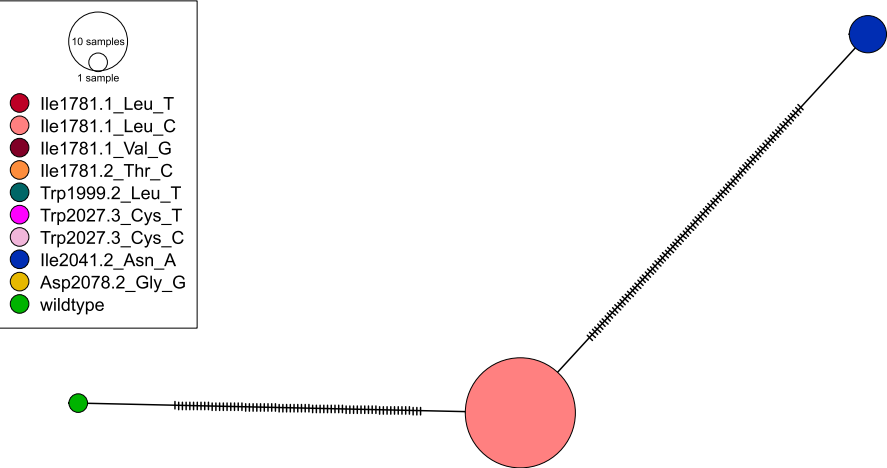


NL01505

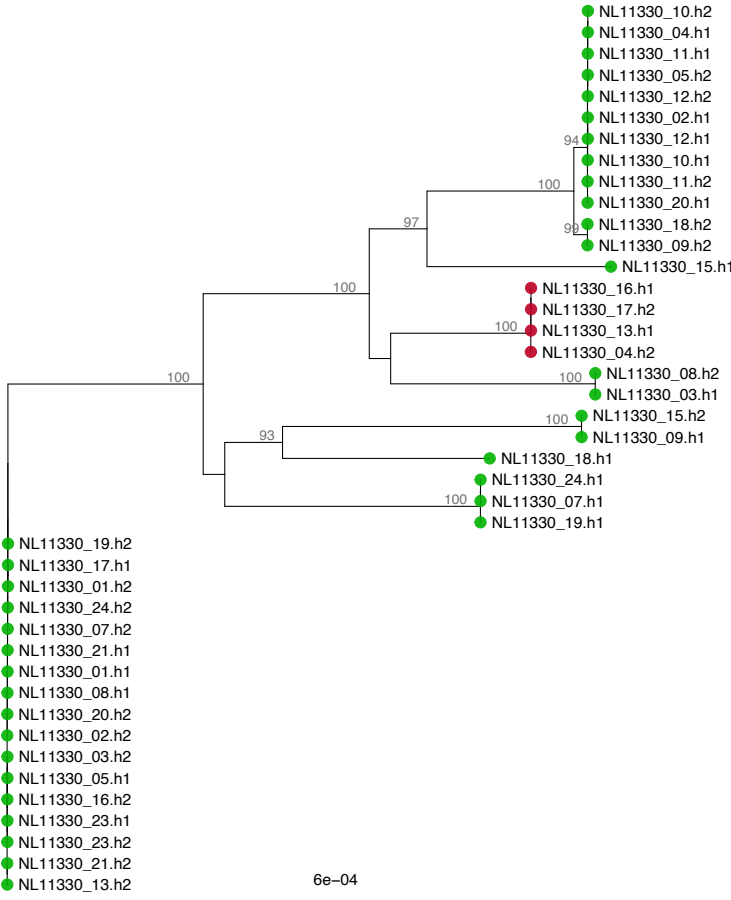
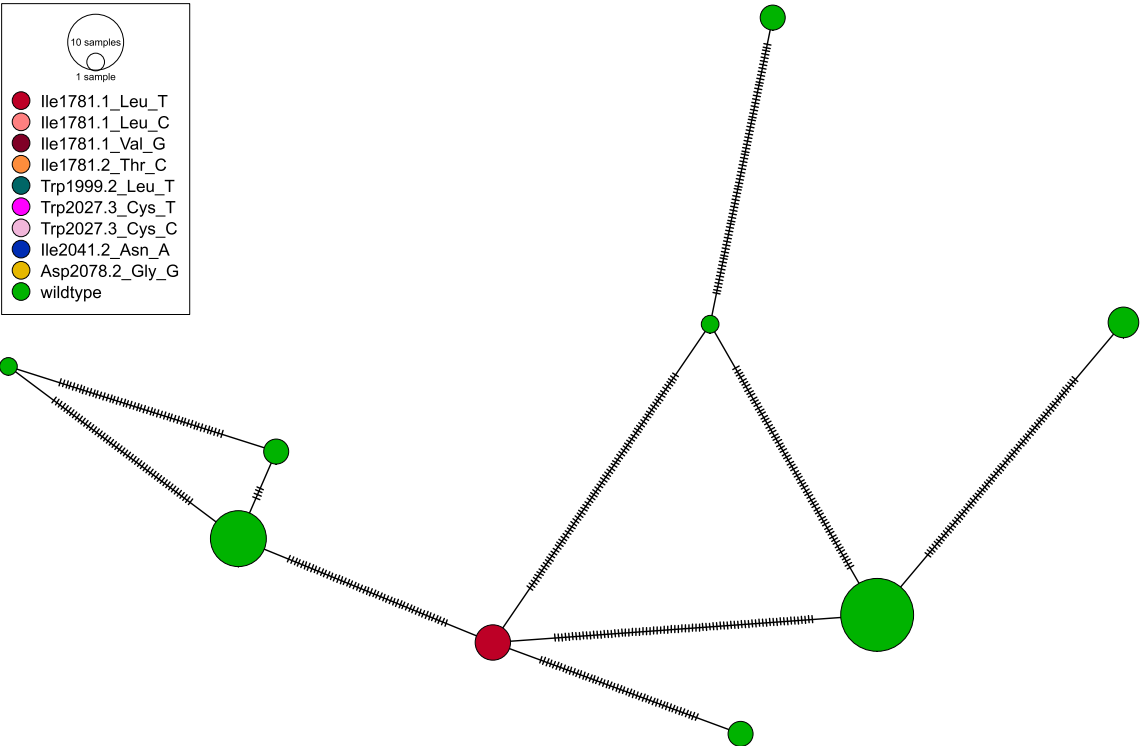
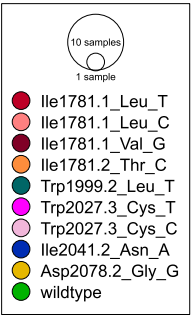




NL01664

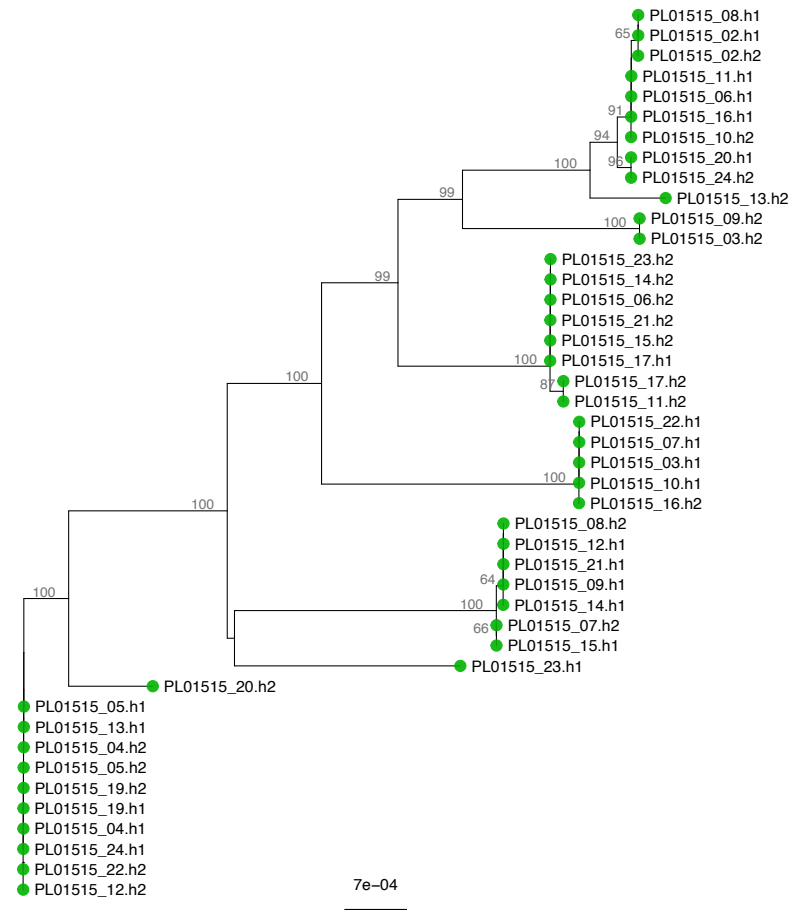
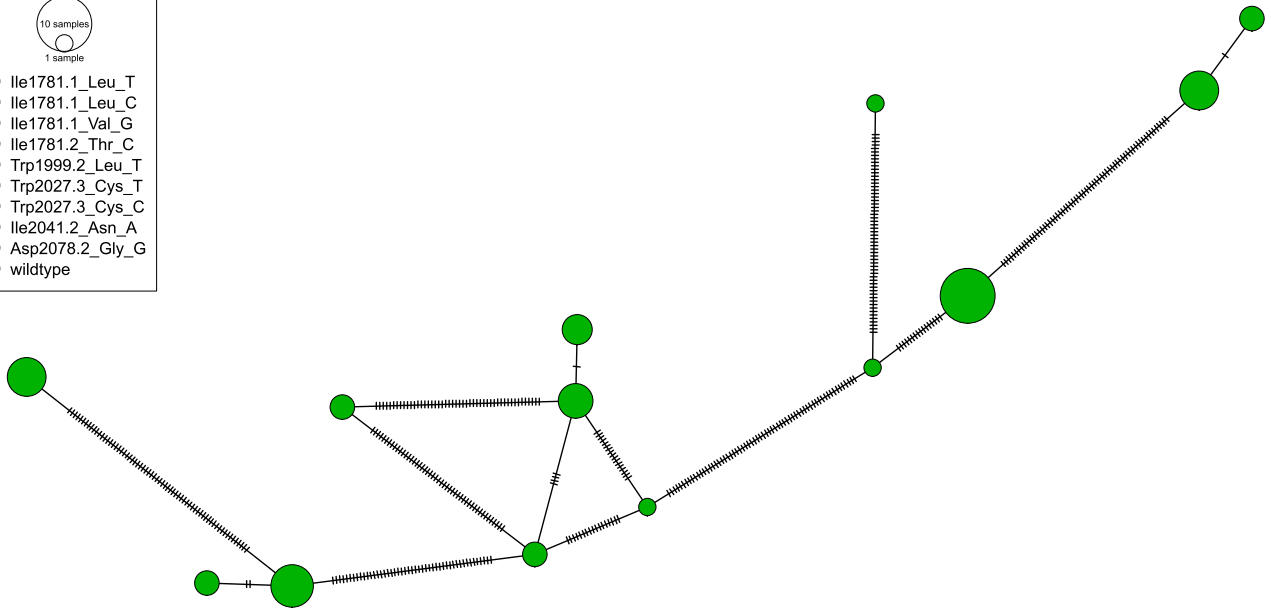
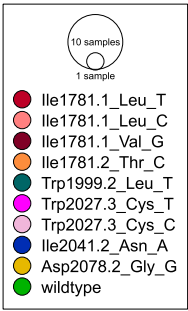


NL11330

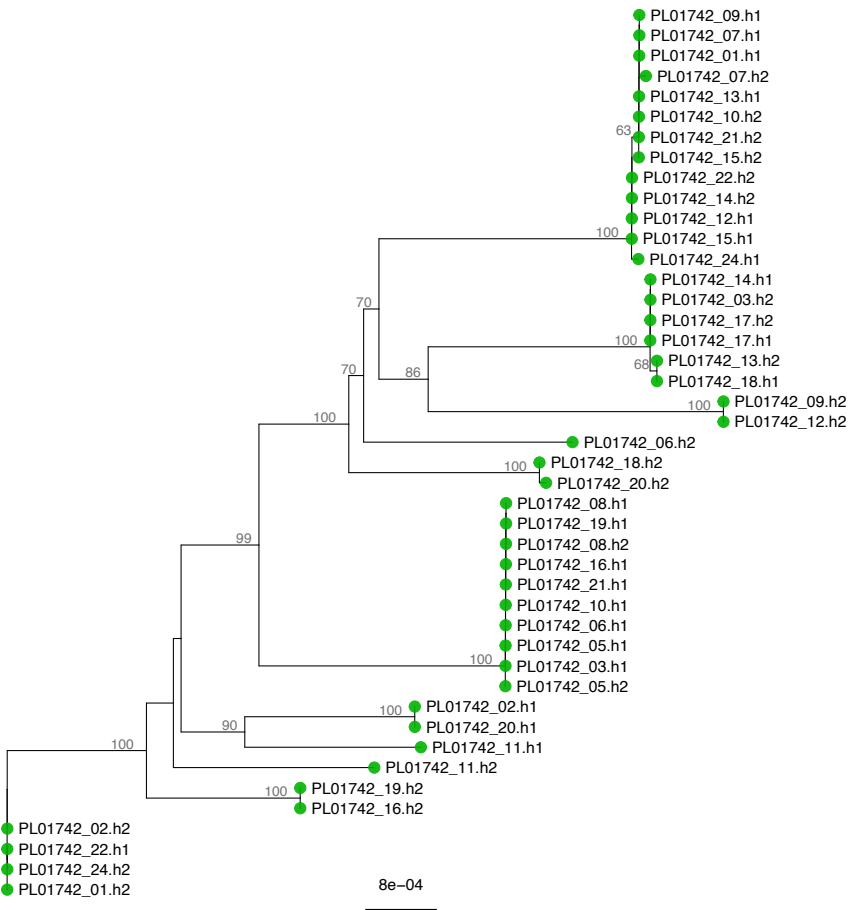
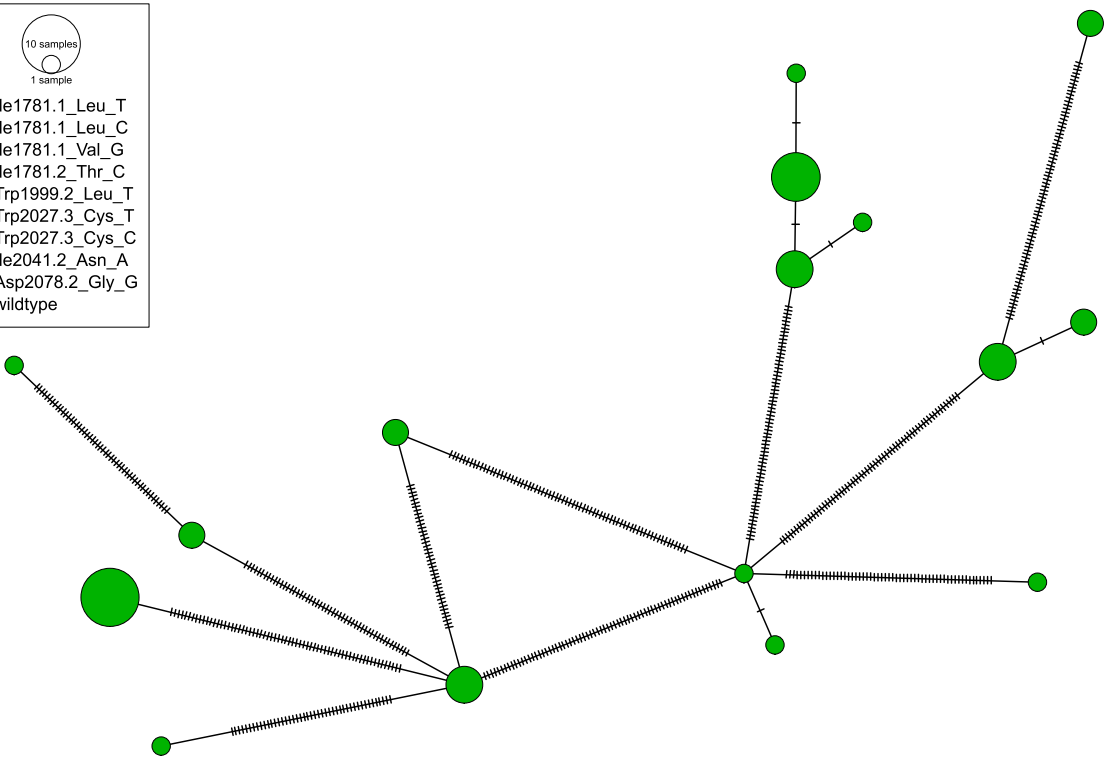
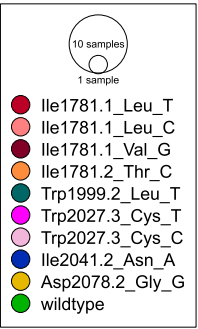


6e-04

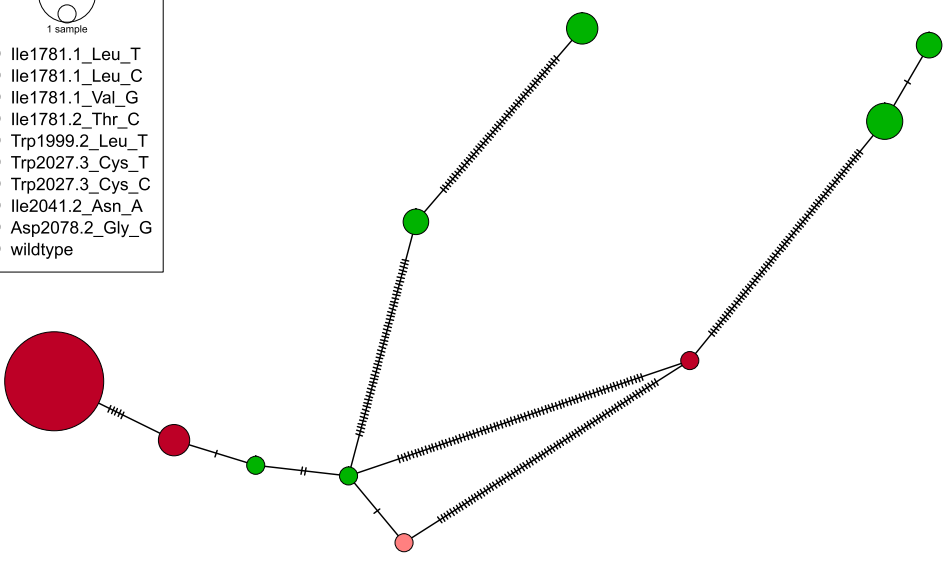
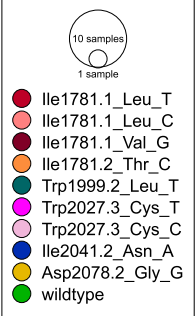
PL01515



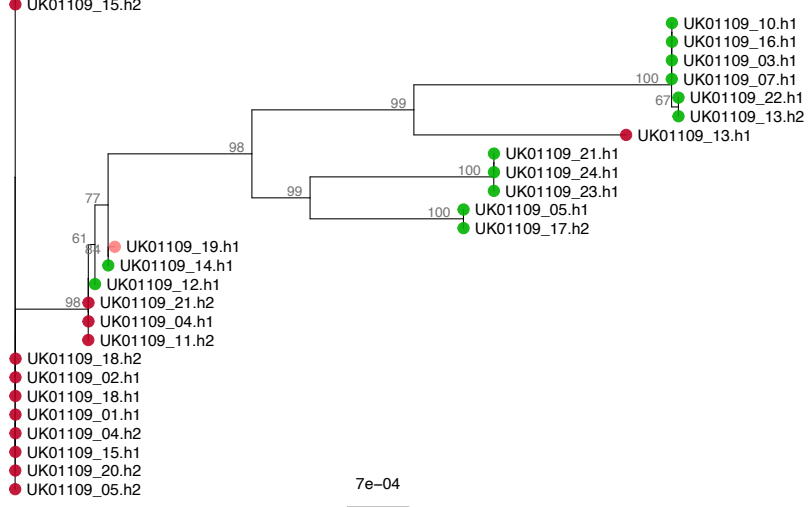
PL01742



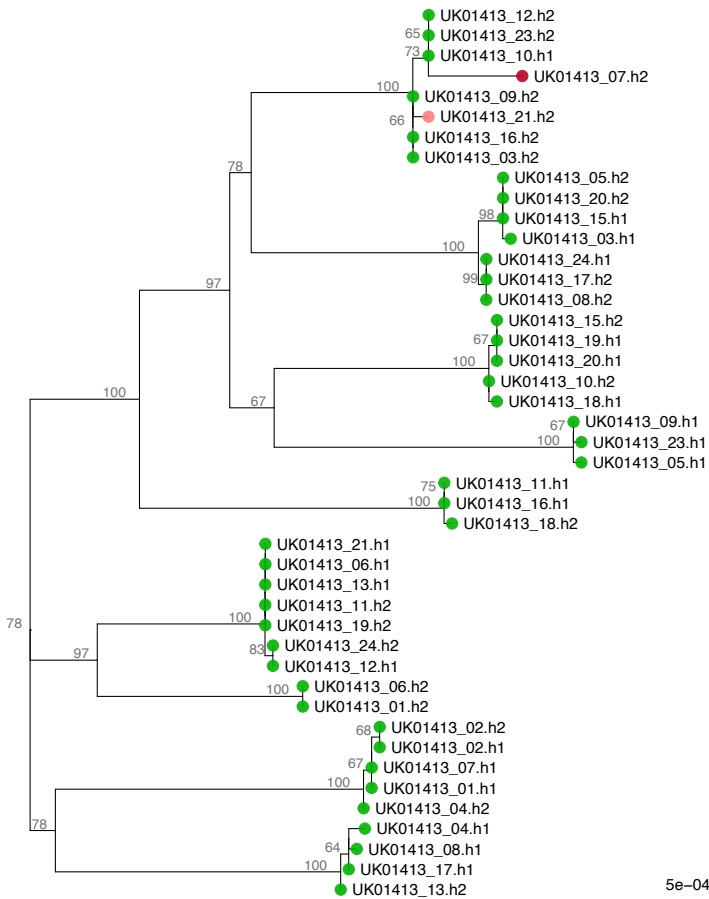
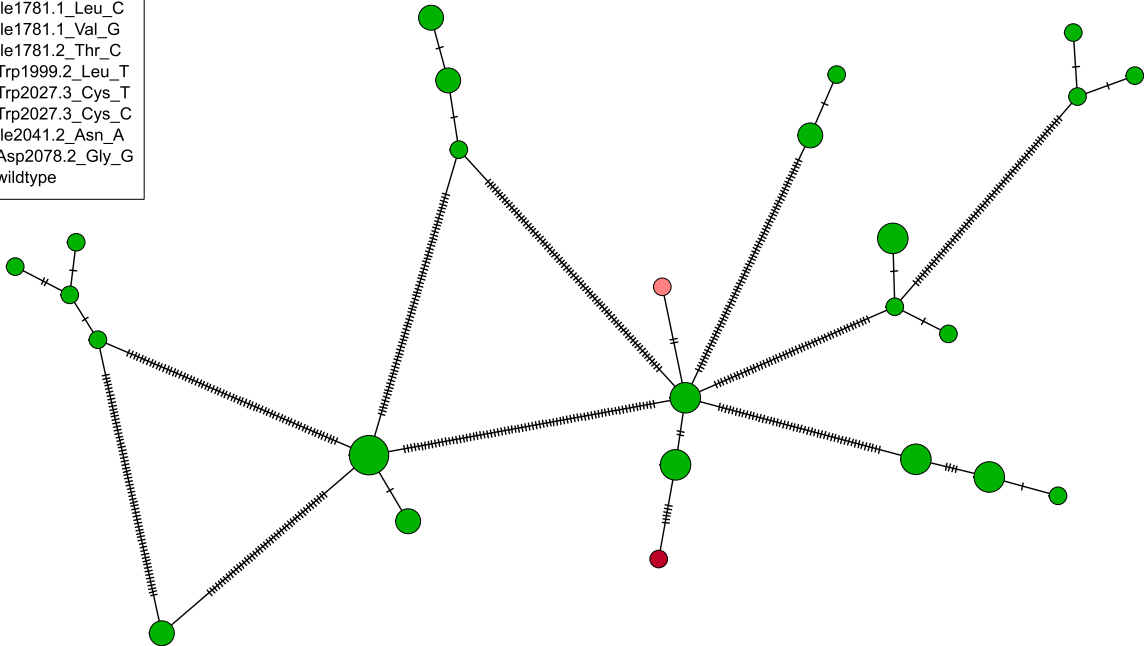
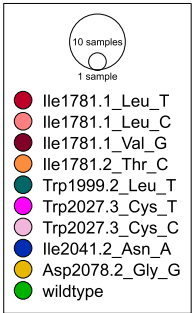
UK01109



- UK01109\_16.h2
- UK01109\_23.h2
- UK01109\_20.h1
- UK01109\_09.h1
- UK01109\_11.h1
- UK01109\_14.h2
- UK01109\_08.h1
- UK01109\_19.h2
- UK01109\_01.h2
- UK01109\_24.h2
- UK01109\_08.h2
- UK01109\_10.h2
- UK01109\_12.h2
- UK01109\_09.h2
- UK01109\_06.h1
- UK01109\_03.h2
- UK01109\_07.h2
- UK01109\_06.h2
- UK01109\_17.h1
- UK01109\_02.h2
- UK01109\_22.h2
- UK01109\_15.h2

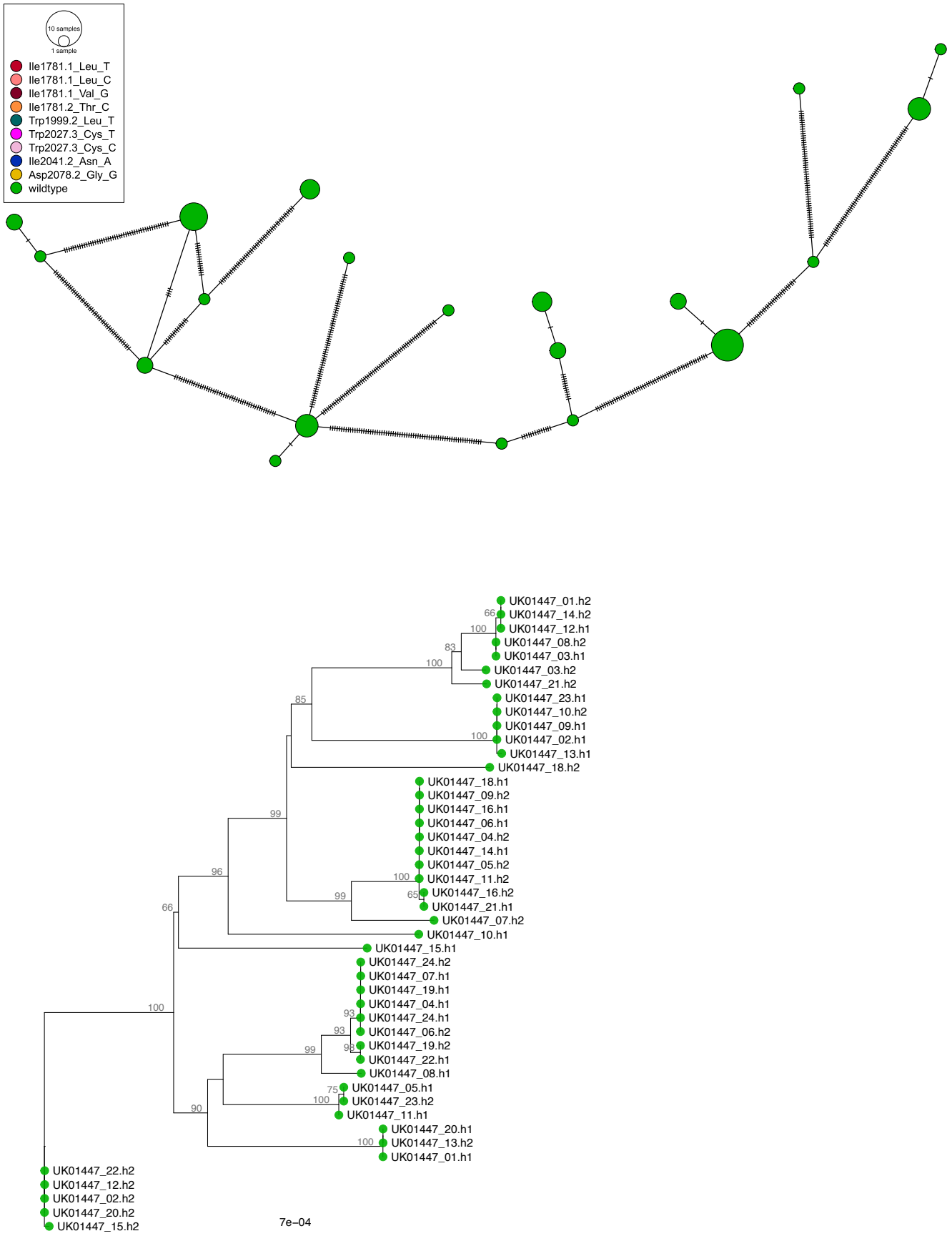


UK01413

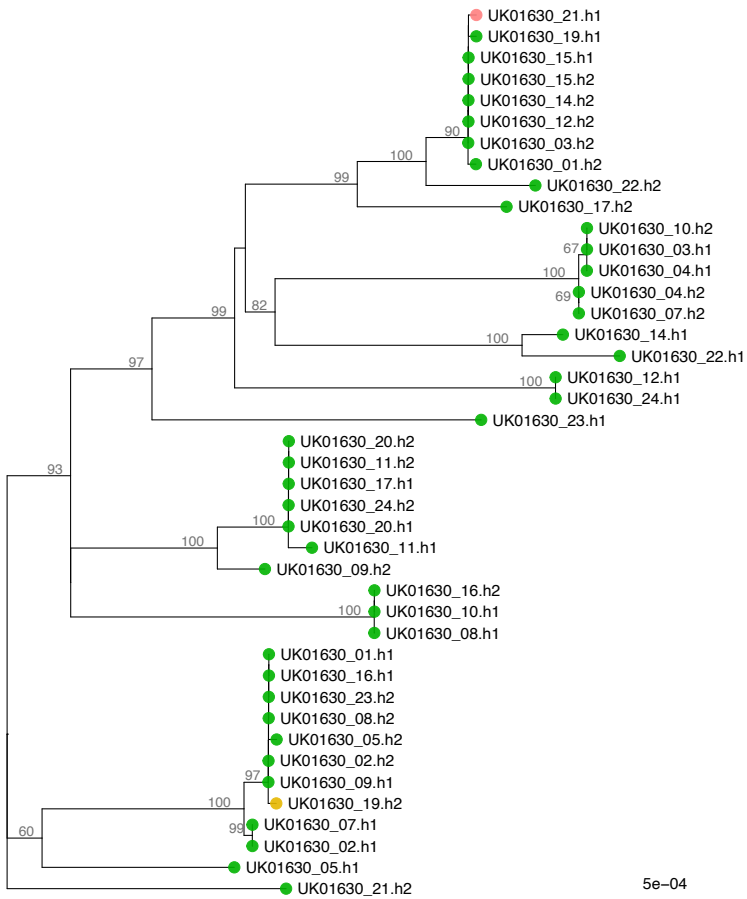
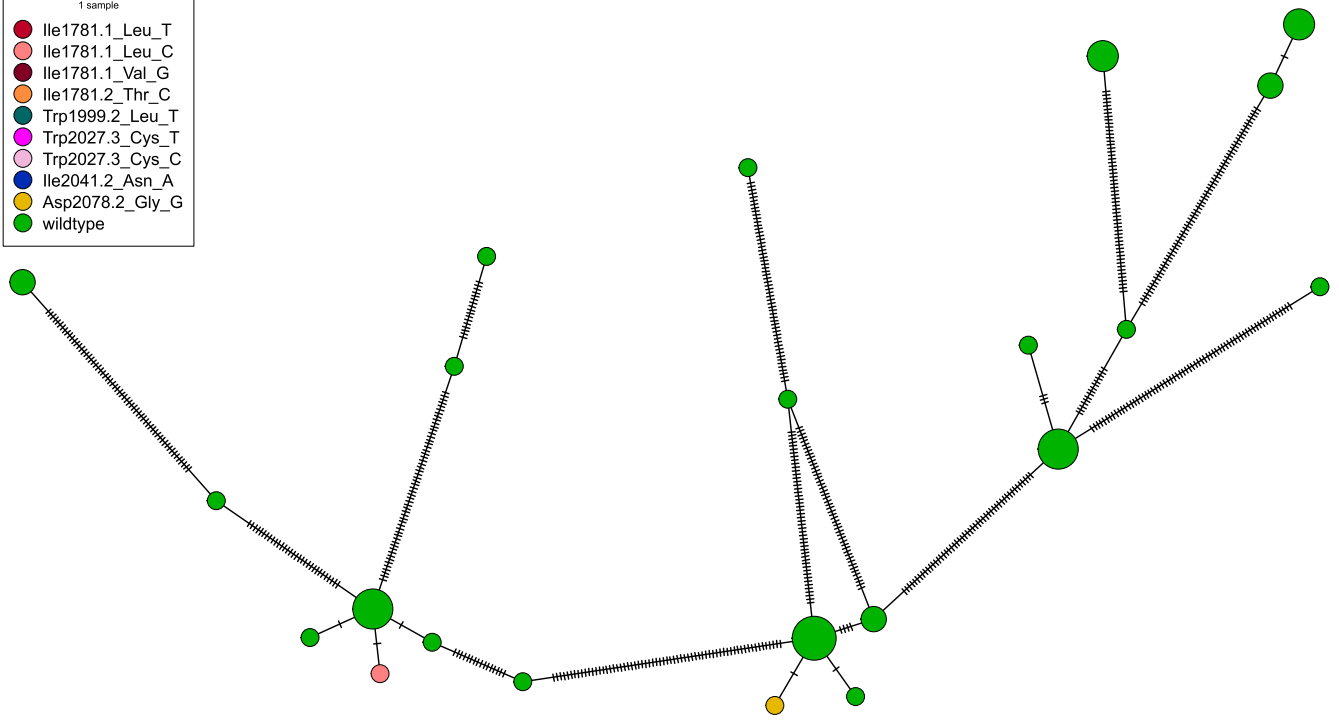
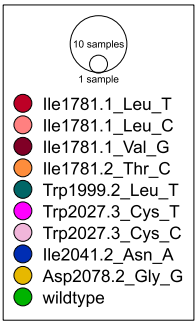


5e-04

UK01447



UK01630



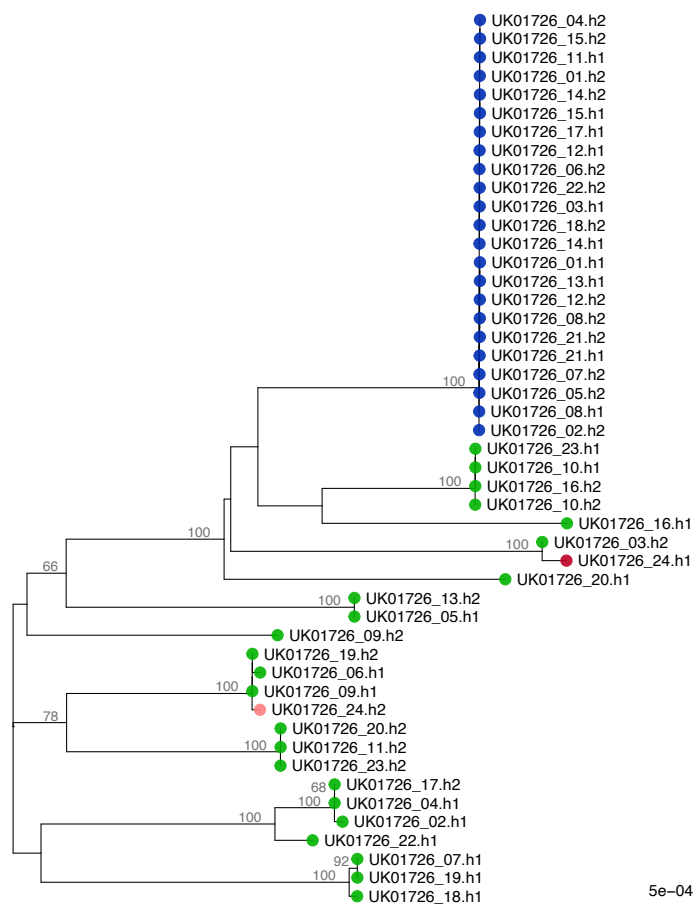
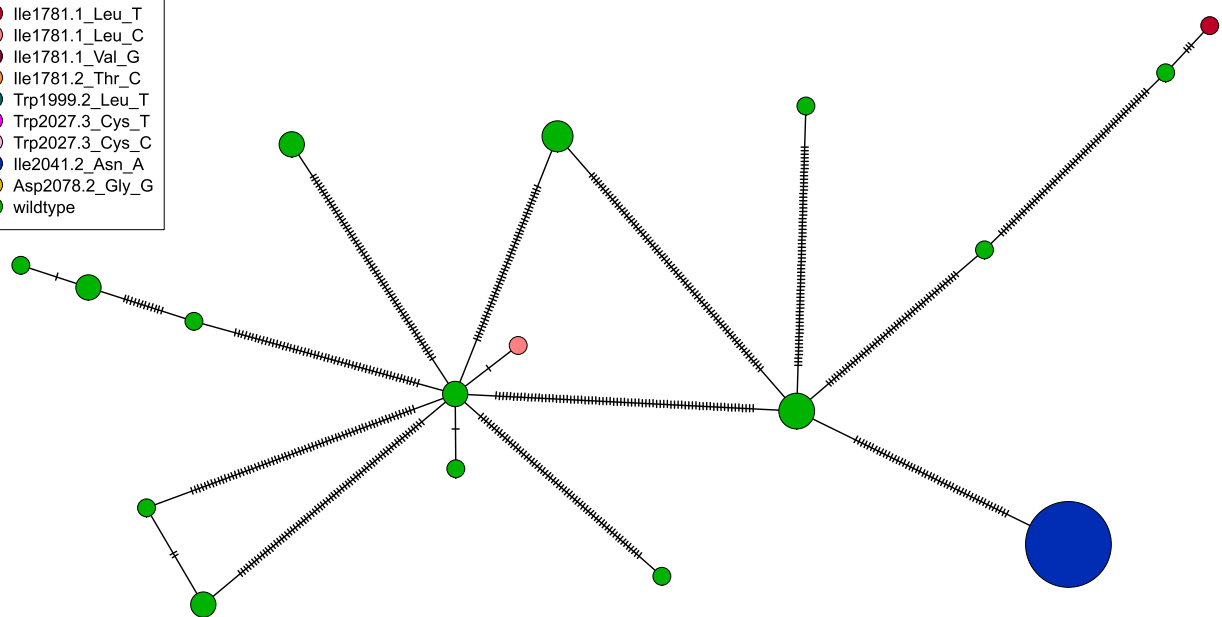
5e-04



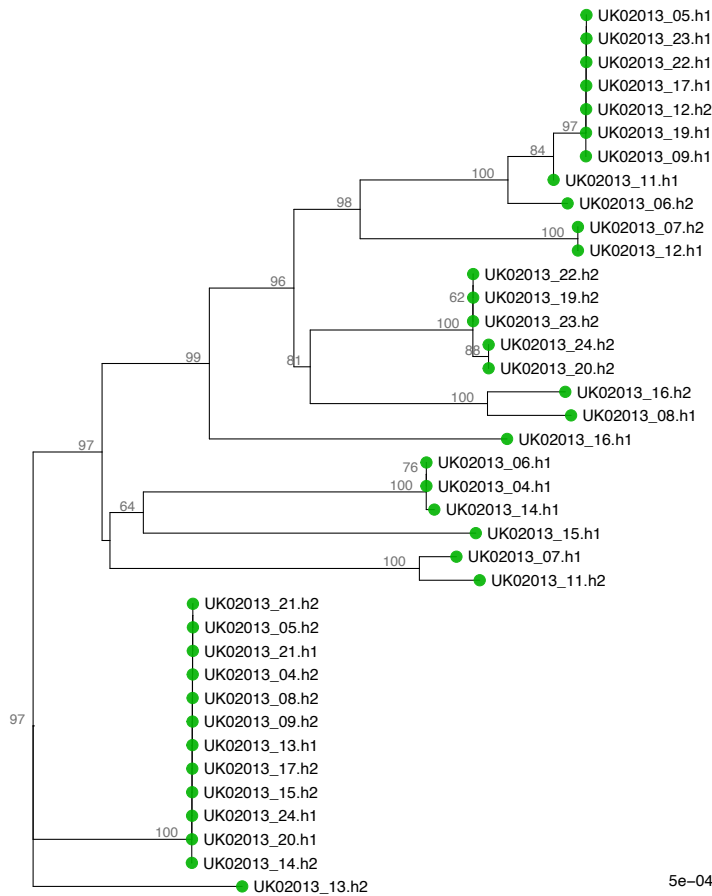
10 samples

1 sample

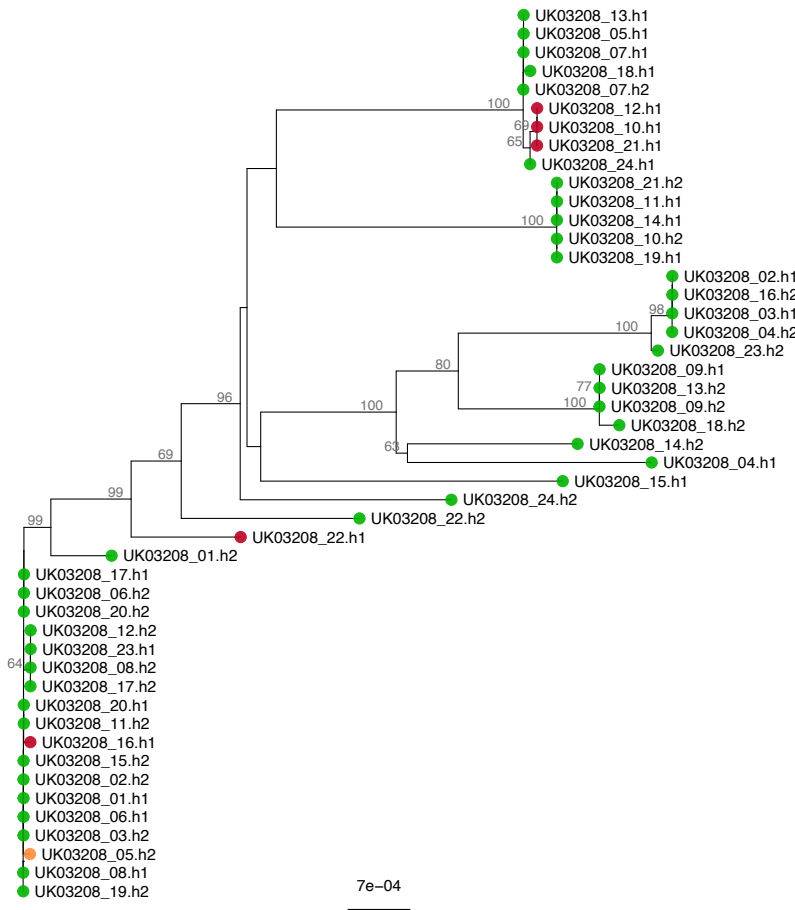
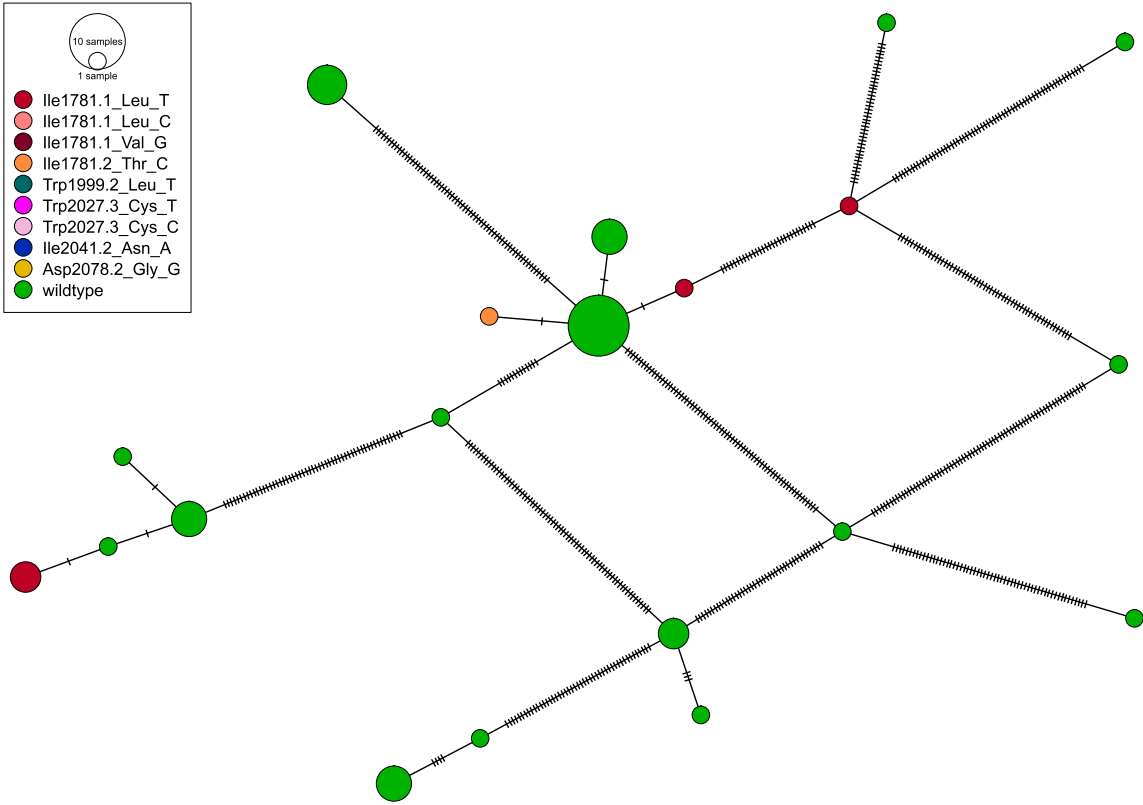
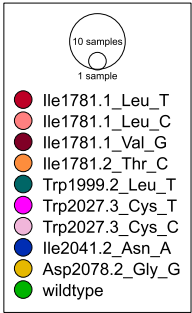
- Ile1781.1\_Leu\_T
- Ile1781.1\_Leu\_C
- Ile1781.1\_Val\_G
- Ile1781.2\_Thr\_C
- Trp1999.2\_Leu\_T
- Trp2027.3\_Cys\_T
- Trp2027.3\_Cys\_C
- Ile2041.2\_Asn\_A
- Asp2078.2\_Gly\_G
- wildtype



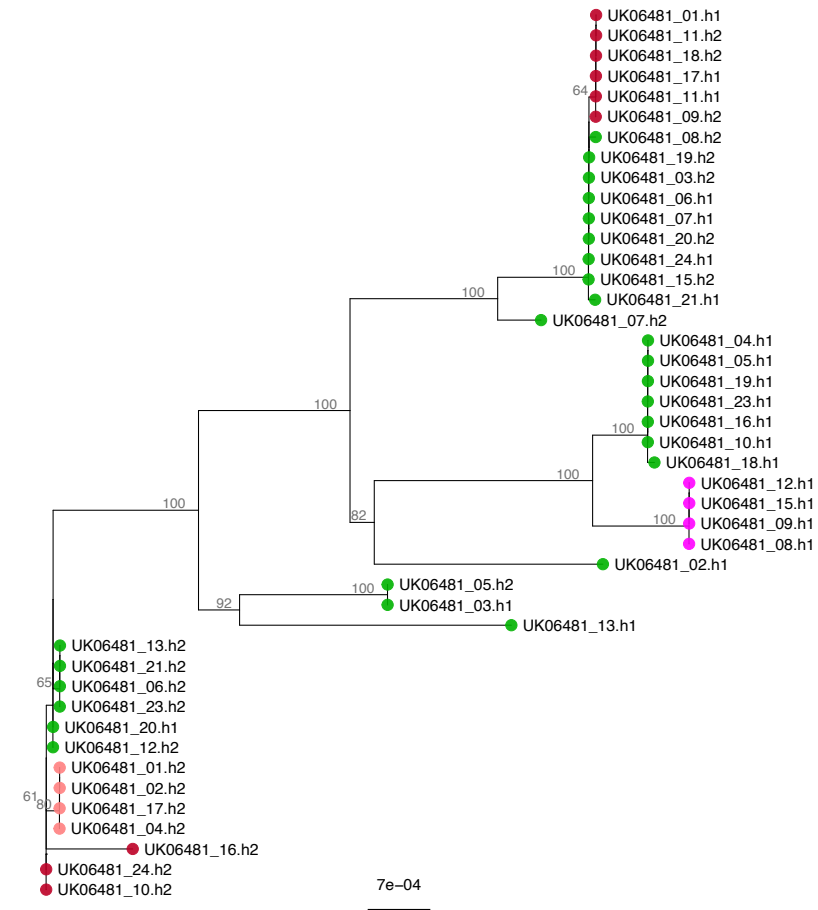
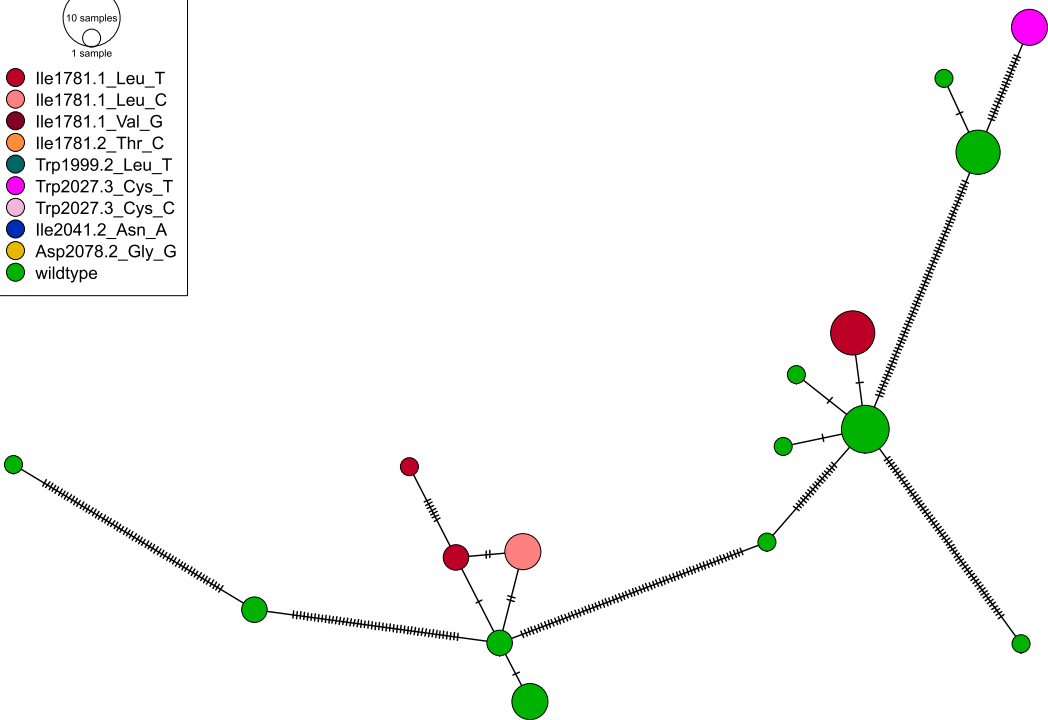
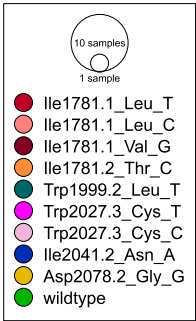
5e-04



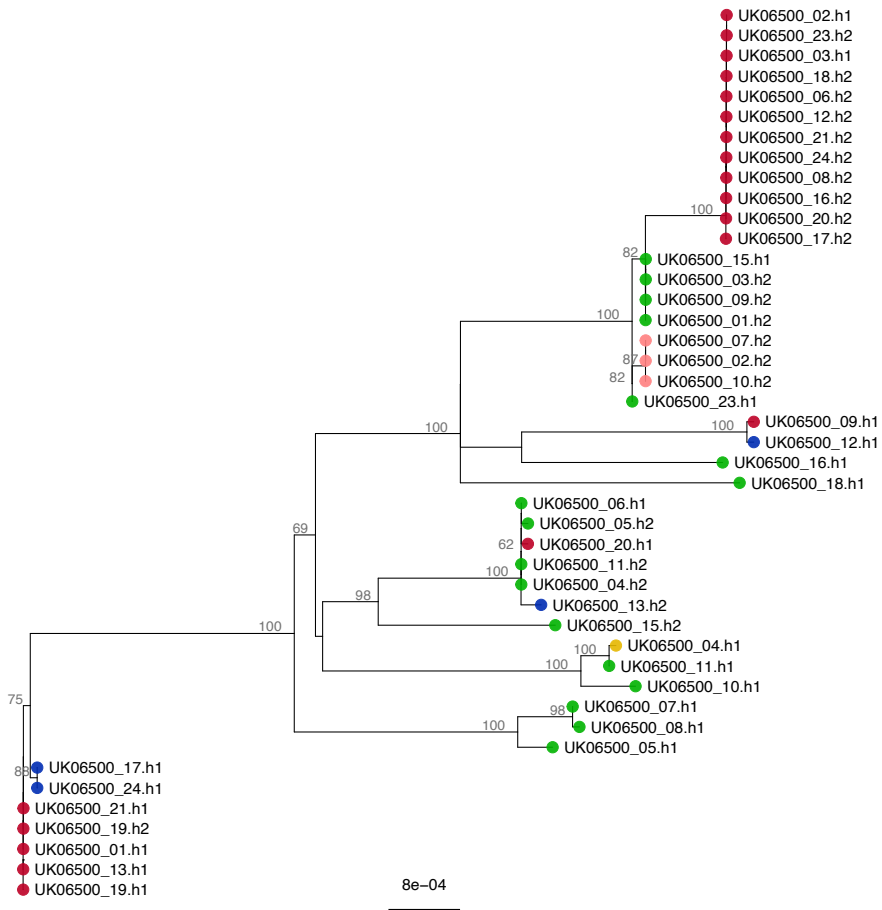
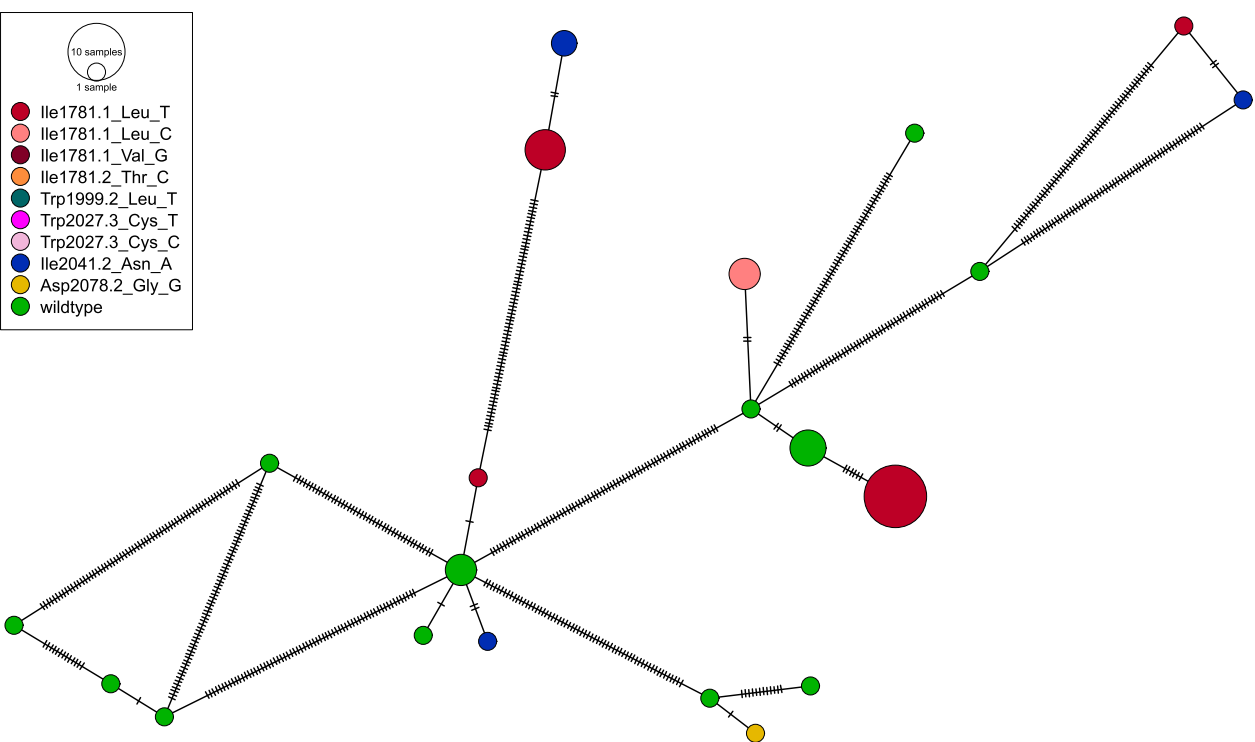
UK03208



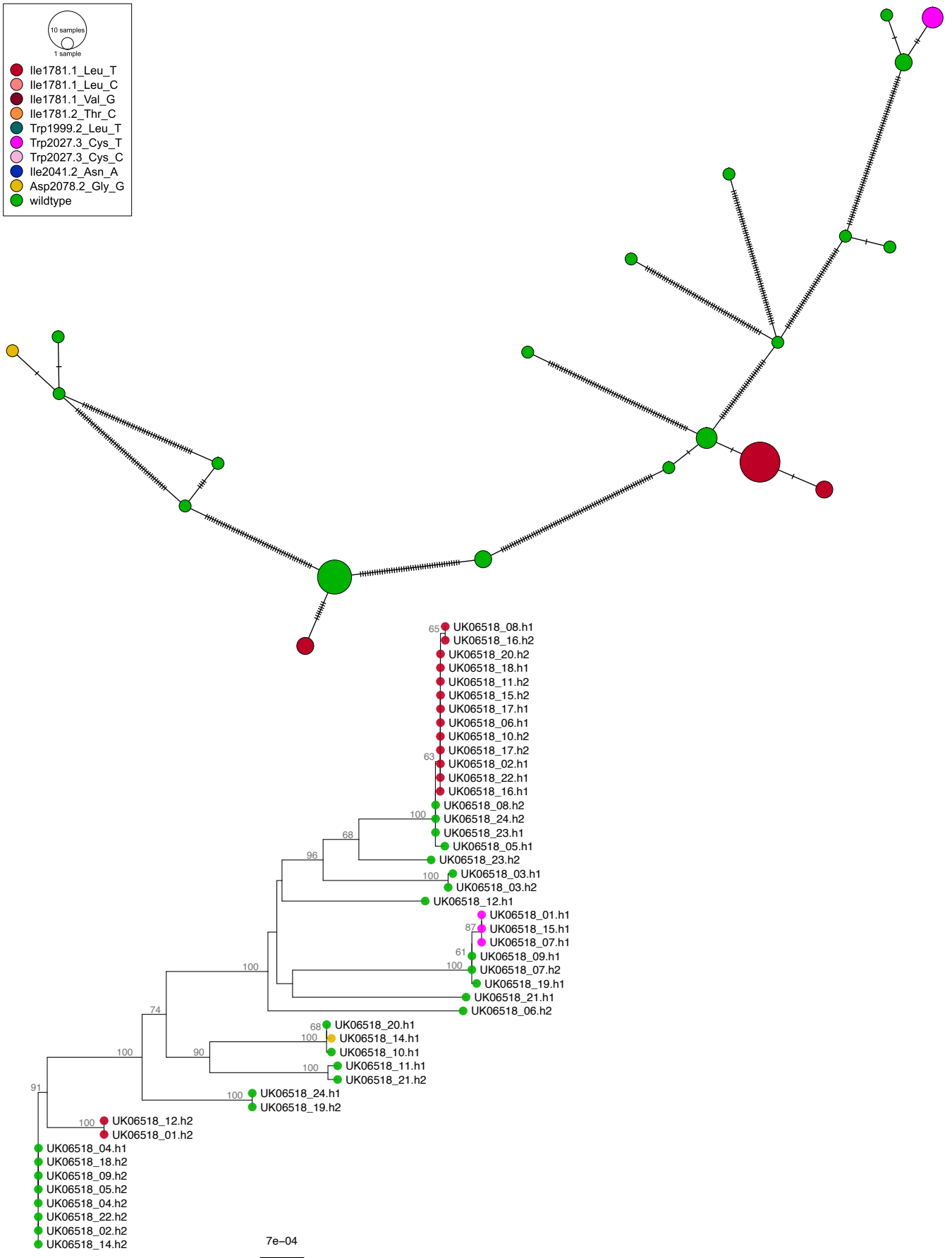
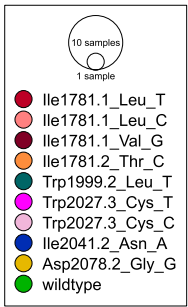
UK06481



UK06500



UK06518



UK10545

